

COLUMBUS COUNTY

Acme, name changed from Cronley

(Columbus)

Hettie B. Jordan	11 Jul 1911
Leske Powell	26 Nov 1912
Lucile Smith	1 May 1916
Ruth M. Rodgers	30 Oct 1918
Ruth M. Butler (marriage)	3 Aug 1925
Name changed to Riegelwood	2 Jan 1963



Type 1
32 mm Black
1910 Type B 4-Bar
27 Oct 1914
26 Jun 1922



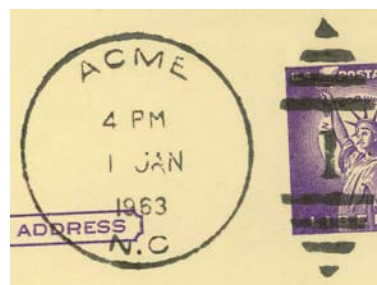
Type 2
42 mm Black
1941 Non-Standard 4-Bar



Type 3
33.5 mm Black
1936 Type F/1 4-Bar
21 Mar 1944



Type 4
31.5 mm Black
1936 Type F/1 4-Bar
4 May 1948
18 Mar 1954

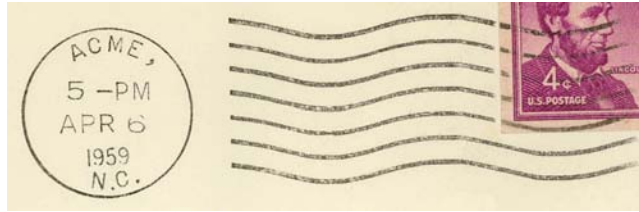


Type 5
30.5 mm Black
Metal Duplex Type ?
16 May 1955
1 Jan 1963

COLUMBUS COUNTY

Acme (Cont.)

(Columbus)



Type 6
22.5 mm Black
International Machine
Type AT/S 2711
28 Apr 1958
6 Dec 1962

Applewhite

(Columbus)

Elisha L. Applewhite	15 Mar 1892
Robert C. Applewhite	17 Mar 1896
George W. Applewhite	28 Oct 1905
Appointment rescinded	27 Feb 1906
Melton A. Bordeaux	27 Feb 1906
Discontinued	29 Jun 1907
Mail to Robeson	

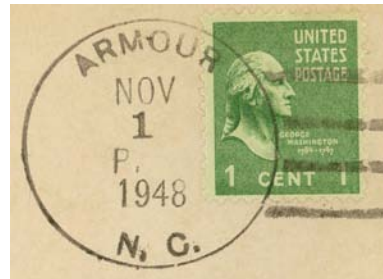


Type 1
28.5 mm Black
Doane Type 2-?
11 Mar 1905

Armour, from Brunswick County

(Columbus)

Richard S. Love	1877
Edgar F. Barlow	14 May 1883
William M. Parker	18 Dec 1884
George M. Summerell	20 Sep 1888
William J. Elwell	28 Jul 1898
Hattie Love	21 Sep 1901
William R. Love	30 Sep 1903
Mrs. Amanda B. Love, Acting	13 Jul 1935
Amanda B. Love	26 Aug 1935
Discontinued	31 May 1953
Mail to Bolton	



Type 1
33 mm Black
1936 Type F/1 4-Bar
1 Nov 1948
30 May 1953

Artesia

(Columbus)

Platt W. Davis	24 Apr 1907
Bruce Pierce	23 Oct 1907
Della C. Pierce	6 Apr 1914
Robert W. Ashley	15 Mar 1916
Discontinued	30 Dec 1916
Mail to Hallsboro	

COLUMBUS COUNTY

Beach's Mills

(Columbus)

Daniel P. Beach 21 Aug 1856
 Discontinued 20 Oct 1860



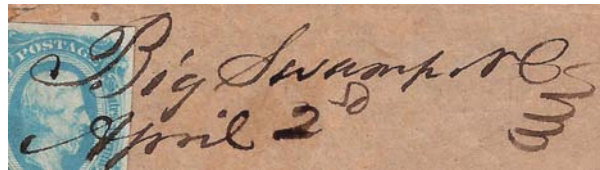
Manuscript
 25 Jan 185x

Big Swamp

(Columbus)

Moore Lennon 18 Feb 1837
 Francis Lennon 24 Jul 1846
 Lot B. Lennon 29 Oct 1847
 Haynes Lennon 21 Jun 1852
 Haynes Lennon, CSA 3 Jul 1861
 CSA office closed on or before 30 Apr 1865
 Federal office discontinued 6 Dec 1866
 Florinna A. Lennon 16 Jan 1872
 Discontinued 7 Apr 1873

Confederate

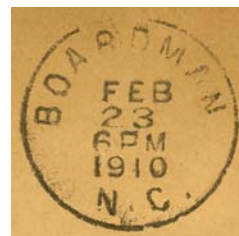


Manuscript
 2 Apr 186x

Boardman, name changed from Hub

(Columbus)

Burdis Anderson 12 Apr 1899
 Edwin B. Wright 25 Oct 1902
 Francis M. Stevens 17 Feb 1911
 Troy Hester 22 Apr 1914
 Fannie B. Fields 5 Jan 1922
 Fannie B. Hall (marriage) 2 Sep 1922
 Simpson E. Fields, Acting 21 Mar 1932
 Onnie M. Hill 2 Nov 1932
 James H. Inman, Acting 25 Oct 1945
 James H. Inman 7 Aug 1947
 Discontinued 31 Oct 1954
 Mail to Evergreen



Type 1
 28 mm Black
 Metal Duplex Type H2
 7 Oct 1901
 8 Mar 1910

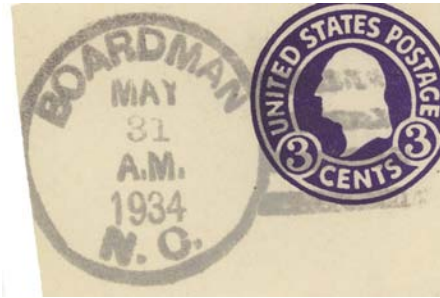


Type 2
 31.5 mm Black
 1910 Type B 4-Bar
 24 Jan 1914
 9 Jan 1920

COLUMBUS COUNTY

Boardman (Cont.)

(Columbus)



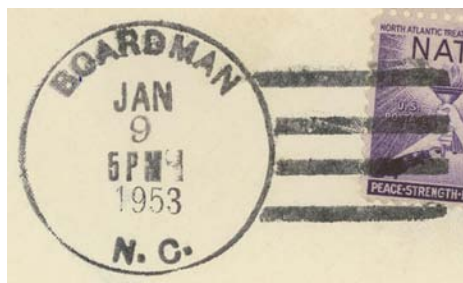
Type 3
35 mm Black
1934 Non-Standard 4-Bar
31 May 1934



Type 4
32.5 mm Black
1936 Type F/1 4-Bar
25 Feb 1943



Type 5
32 mm Black
1936 Type F/1 4-Bar
24 Jan 1949



Type 6
33 mm Black
1936 Type F/1 4-Bar
20 Oct 1951
4 Sep 1953



Type 7
30 mm Magenta
30 Oct 1954

COLUMBUS COUNTY

Boardman (Cont.)

(Columbus)

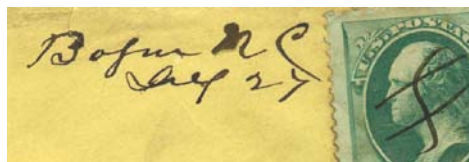


Type 8
33.5 mm Black
1936 Type F/1 4-Bar
30 Oct 1954

Bogue

(Columbus)

John W. Hall	25 Mar 1861
John W. Hall, CSA	3 Jul 1861
CSA office closed on or before	30 Apr 1865
Elizabeth P. Edwards	4 Jan 1866
John W. Hall	25 Feb 1875
Name changed to Hallsboro	31 Mar 1884

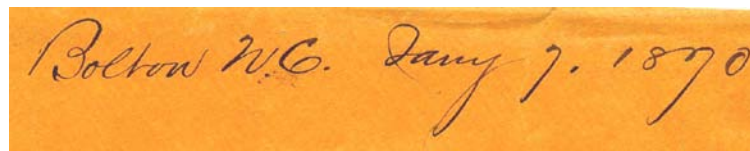


Manuscript
27 Jan 187x

Bolton, from Brunswick County

(Columbus)

Jackson W. Brinkley	1877
Andrew G. Holmes	18 Mar 1884
Barnes W. Brinkley	18 Dec 1884
Martha Brinkley	18 May 1887
C. H. Dock	17 Apr 1893
Appointment rescinded	29 Jun 1894
Martha Brinkley continued	29 Jun 1894
H. J. Farmer	29 Jan 1896
Mary Frow	7 Nov 1896
Discontinued	16 Feb 1897
Mail to Byrdsville	
Mary Troy	13 Sep 1897
Sallie F. Troy	28 Apr 1914
Alonzo B. Ward, Acting	14 Sep 1932
Harry A. Paxton	14 Feb 1933
Stella M. Blue	18 May 1939
Mae L. Beck, Acting	30 Nov 1958
Kelly M. Holmes, Acting	16 Oct 1959
Kelly M. Holmes	10 Jul 1961
John E. Oliver Officer-In-Charge	16 Oct 1978
Mrs. Thelma Louise Mills	19 May 1979
Alma C. Graham Officer-In-Charge	2 Aug 2001
Pamela K. Valle	6 Oct 2001
Cynthia K. Baldwin Officer-In-Charge	25 Jul 2012
Daniele Brooks Horne Officer-In-Charge	1 Feb 2013
Converted to a Level 6 (6-hour)	
Remotely Managed post office of	
Lake Waccamaw	23 Feb 2013



Manuscript
12 Jun 1869
7 Jan 1870



Type 1
27.5 mm Black
8 Feb 189x

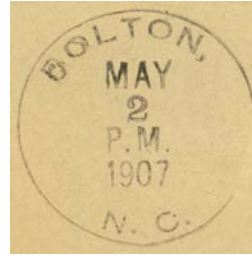


Type 2
28 mm Black
Doane Type 2-?
11 May 1906

COLUMBUS COUNTY

Bolton (Cont.)

(Columbus)



Type 3
31 mm Black
Doane Type 3-3
2 May 1907
14 May 1907



Type 4
31.5 mm Black
1906 Type A/1 4-Bar
15 Nov 1907
10 Feb 1912



Type 5
32 mm Black
1910 Type B 4-Bar
12 Jul 1912
11 Apr 1914



Type 6
30 mm Black
Metal Duplex Type H2
26 Jan 1926



Type 7
31.5 mm Black
1930 Type F 4-Bar
5 Nov 1931

COLUMBUS COUNTY

Bolton (Cont.)

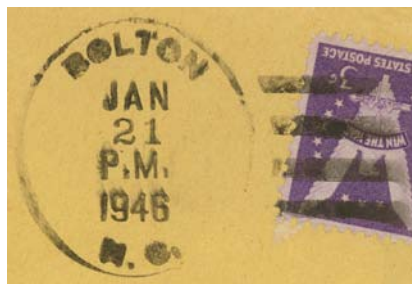
(Columbus)



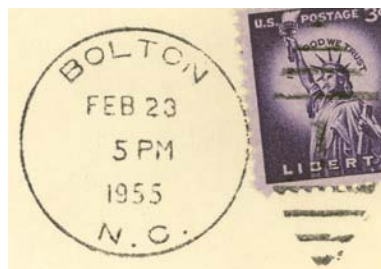
Type 8
33 mm Black
1924 Type D 4-Bar
1 May 1935



Type 9
33 mm Black
1931 Type C/2 4-Bar
4 Aug 1936
3 May 1939



Type 10
32 mm Black
1936 Type F/1 4-Bar
2 Jun 1941
21 Jan 1946



Type 11
30 mm Black
Metal Duplex Type ?
25 Sep 1948
16 Jan 1961



Type 12
32 mm Black
1963 Type F/2 4-Bar (28423)
20 Feb 1968
16 Dec 1976

COLUMBUS COUNTY

Bolton (Cont.)

(Columbus)



Type 13
32 mm Black
1963 Type F/2 4-Bar (28423)
18 Apr 1971



Type 14
31.5 mm Black
Self-Inking Postmarker
Type 1A (28423)
12 Jun 1996



Type 15
35 mm Black
Self-Inking Postmarker (28423)
4 Mar 1998



Type 16
46 mm Red
Self-Inking Postmarker (28423)
6 Sep 2006

COLUMBUS COUNTY

Braswell

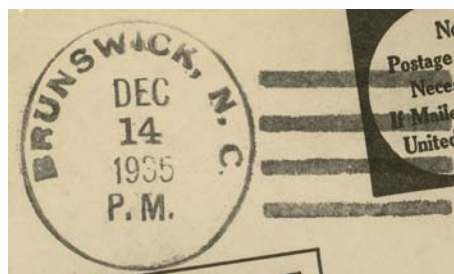
(Columbus)

Howard M. Bullard 12 May 1900
 Discontinued 15 Oct 1904
 Mail to Chadbourn

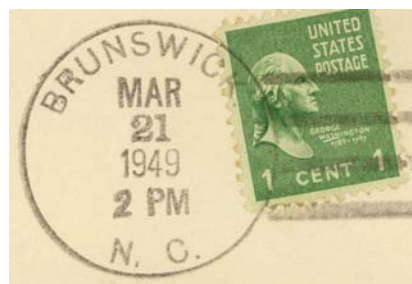
Brunswick

(Columbus)

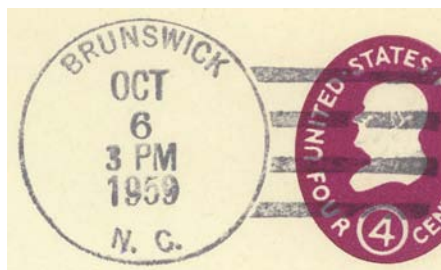
George W. Cox 8 Jan 1926
 Redden Gaskin, Acting 20 Oct 1927
 Redden Gaskin 27 Jan 1928
 Margaret W. Collins, Acting 30 Nov 1958
 L. Hubert Collins 1 Apr 1963
 Mrs. Nancy L. Hill 13 Jan 1979
 Linda E. Williamson Officer-In-Charge 25 Aug 1992
 Miami Grovner Officer-In-Charge 23 Oct 1992
 Evelyn W. Williams Officer-In-Charge 16 Mar 1993
 William D. Bowman Jr. 12 Jun 1993
 Miami Grovner Officer-In-Charge 4 Jun 1996
 Alan D. Harrelson 9 Nov 1996
 Stephanie D. Newkirk Officer-In-Charge 29 Feb 2008
 Leroy Austin Jr. 21 Jun 2008
 Sheila Goss Officer-In-Charge 23 Jul 2012
 Converted to Remotely Managed post office of Whiteville 26 Jan 2013



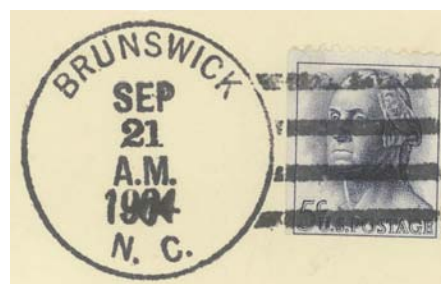
Type 1
 31.5 mm Black
 1930 Type E 4-Bar
 14 Dec 1935



Type 2
 34 mm Black
 1936 Type F/1 4-Bar
 21 Mar 1949
 29 Dec 1949



Type 3
 32.5 mm Black
 1936 Type F/1 4-Bar
 7 Jan 1954
 19 Sep 1962



Type 4
 33 mm Black
 1936 Type F/1 4-Bar
 4 May 1964
 21 Sep 1964

COLUMBUS COUNTY

Brunswick (Cont.)

(Columbus)



Type 5
31 mm Black
1963 Type F/2 4-Bar (28424)
30 Mar 1970
21 Jun 1990



Type 6
29.5 mm Magenta
6 Jun 1973



Type 7
27.5 mm Magenta
5 Jan 1980



Type 8
33.5 mm Black
1963 Type F/2 4-Bar (28424)
9 Jul 1985



Type 9
32.5 mm Black
1963 Type F/2 4-Bar (28424)
4 Jun 1991

COLUMBUS COUNTY

Brunswick (Cont.)

(Columbus)



Type 10
35 mm Black
Self-Inking Postmarker (28424)
15 Jun 1994
4 Aug 1995



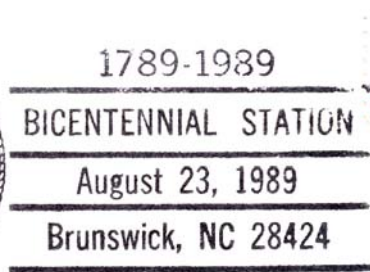
Type 11
35.5 mm Black
Self-Inking Postmarker
(28424-9998)
6 Sep 2006



Type 12
31 mm Red
Self-Inking Postmarker
(28424-9998)
6 Sep 2006

Temporary Station Cancels

Bicentennial Station



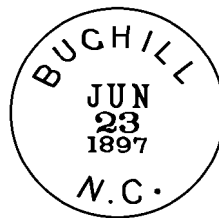
Type 1
86.5 x 36.5 mm Black
(28424)
23 Aug 1989

COLUMBUS COUNTY

Bug Hill, Bughill

(Columbus)

John J. C. Gore	22 May 1860
John J. C. Gore, CSA	5 Jul 1861
Moses Williams, CSA	Bibliog. #19
CSA office closed on or before	30 Apr 1865
Federal office discontinued	7 Jan 1867
Mrs. Darcus A. Gore	4 Sep 1876
Joseph P. Faulk	18 Apr 1883
Thomas J. Stanly	8 Jan 1884
Name changed to Bughill	4 Nov 1893
redell L. Stephens	14 Nov 1893
Thomas J. Stanly	12 May 1898
Pearson A. Stanley, Acting	7 Oct 1911
Pearson A. Stanley	14 Feb 1912
John C. Whittington, Acting	1 Jun 1935
John C. Whittington	9 Jul 1935
Discontinued	15 Oct 1936
Mail to Nakina	



Type 1
28 mm Black
23 Jun 1897



Manuscript
11 Mar 1899



Type 2
32.5 mm Black
1910 Type B 4-Bar
24 Feb 1920



Type 3
32.5 mm Black
1925 Type C/1 4-Bar
15 Oct 1936

COLUMBUS COUNTY

Byrdsville

(Columbus)

Francis M. Creech	13 Nov 1877
Mittie Byrd	23 Nov 1912
Discontinued	31 May 1914
Mail to Bolton	



Type 1
27 mm Black
3 Mar 1891

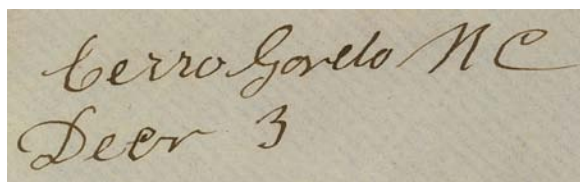


Type 2
31 mm Black
1906 Type A/1 4-Bar
29 Jul 1908

Cerro Gordo

(Columbus)

William G. Summerlin	8 Aug 1853
Doctor F. Suggs	26 Jan 1854
Henry H. Hinnant	12 Aug 1854
Alfred M. Noble	8 Mar 1855
Sherwood S. Tyler	1 Feb 1856
John W. Darden	29 Jul 1857
Jacob H. Darden	6 Jan 1858
Leven H. Joiner	27 Jul 1858
James H. Noble	18 May 1860
William S. Rackly	10 Sep 1860
Joshua J. Barden	19 Mar 1861
W. S. Rackley, CSA	1 Jul 1861
J. L. Mathis, CSA	19 Aug 1861
Levin H. Joyner, CSA	25 Oct 1861
Edward W. Riddick, CSA	8 Nov 1861
Gustavus A. Belcher, CSA	Bibliog. #19
Marvin D. Godwin, CSA	Bibliog. #19
CSA office closed on or before	25 Apr 1865
James Campbell	24 Apr 1866
Warren J. Coleman	14 Apr 1875
Aaron M. Martin	17 Dec 1875
J. B. Harrelson	6 Apr 1880
William J. Harrison	4 Sep 1890
Josiah B. Harrelson	26 Dec 1893
William H. Harrison	20 Nov 1897
Haynes McD. Kellihan	20 Jan 1904
Clarence W. Harrelson	13 May 1914
Katie E. Kellihan	14 Jul 1915
Thomas H. Keller, Acting	31 Jan 1952
Forest P. Green	7 May 1953
Henry G. Williamson	28 Jul 1954
Beth S. Johnson Officer-In-Charge	31 Aug 1977



Manuscript
3 Dec 1856
1 Dec 1867



Type 1
28 mm Black
28 Nov 1901



Type 2
28.5 mm Black
Doame Type 2-3
7 Dec 1905
29 Mar 1907

COLUMBUS COUNTY

Cerro Gordo (Cont.)

(Columbus)

Jerry M. Dennis Officer-In-Charge	3 Jan 1978
Glen M. Pridgen Officer-In-Charge	20 Apr 1978
Mrs. Carolyn L. Thompson	20 May 1978
Cynthia Nealey Officer-In-Charge	5 Feb 2001
Victor Matthews Officer-In-Charge	18 Aug 2001
Linda E. Williamson Officer-In-Charge	4 Dec 2001
Linda E. Williamson	24 Aug 2002



Type 3
32 mm Black
1908 Type A/2 4-Bar
24 Oct 1909



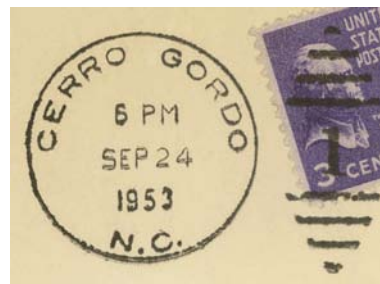
Type 4
32.5 mm Black
1910 Type B 4-Bar
25 Jul 1919



Type 5
30.5 mm Black
Metal Duplex Type H2
23 Apr 1937



Type 6
29 mm Magenta
21 Apr 1946



Type 7
30 mm Black
Metal Duplex Type ?
10 Jul 1949
12 Jan 1960

COLUMBUS COUNTY

Cerro Gordo (Cont.)

(Columbus)



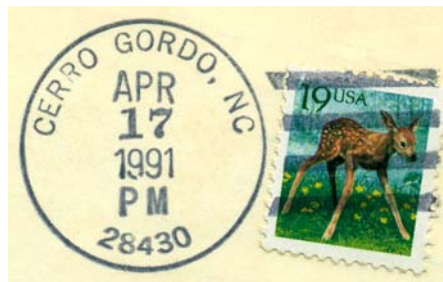
Type 8
31.5 mm Black
1963 Type F/2 4-Bar (28430)
16 Apr 1971



Type 9
33 mm Black
1963 Type F/2 4-Bar (28430)
10 May 1974
18 Jan 1975



Type 10
32 mm Black
1963 Type F/2 4-Bar (28430)
9 Apr 1987
15 Aug 1988



Type 11
33 mm Black
1963 Type F/2 4-Bar (28430)
17 Apr 1991



Type 12
34.5 mm Black
Self-Inking Postmarker
Type 2A (28430)
6 Jun 2000
10 Nov 2000

COLUMBUS COUNTY

Cerro Gordo (Cont.)

(Columbus)



Type 13
38 mm Black
Self-Inking Postmarker (28430)
13 Sep 2006



Type 14
44 mm Red
Self-Inking Postmarker (28430)
13 Sep 2006

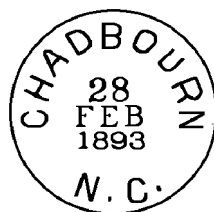
Chadbourn

(Columbus)

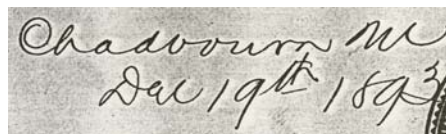
James H. Chadbourn, Jr.	26 May 1882
Joseph A. Brown	19 Mar 1888
Robert E. L. Brown	21 Dec 1892
Agnes M. Struthers	2 Jun 1897
Bessie C. Struthers	27 Jan 1899
Thomas H. Ramsbottom	26 Apr 1901
E. J. Britt	10 Jul 1913
Howard M. Bullard	4 Apr 1922
Auburn B. Bryan., Acting	2 Nov 1925
Wayne E. Bailey	23 Mar 1926
William F. Smith, Jr., Acting	18 Apr 1934
Estell I. Baldwin	16 Jan 1935
Leo Mercer., Acting	30 Sep 1961
Leo Mercer	31 Aug 1962
Nancy L. Hill Officer-In-Charge	3 Jul 1984
Willie E. Martin	18 Aug 1984
Marshall B. McDonald Officer-In-Charge	9 Aug 1988
Johnny M. Chestnut	3 Dec 1988
Ray W. Carstens Officer-In-Charge	20 Aug 1992
Wanda B. Mercer	15 May 1993
Betty F. Hinson Officer-In-Charge	31 Aug 1998
Betty F. Hinson	16 Jan 1999
Terry D. Benton Officer-In-Charge	5 Nov 2004
Terry D. Benton	5 Feb 2005
Cynthia D. Nealy Officer-In-Charge	
Levie A. Fowler Officer-In-Charge	17 Nov 2008



Type 1
27.5 mm Blue
11 Dec 188x



Type 2
27.5 mm Black
28 Feb 1891
28 Feb 1893



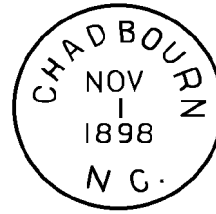
Manuscript
19 Dec 1893

COLUMBUS COUNTY

Chadbourn (Cont.)

(Columbus)

Nancy H. Applewhite Officer-In-Charge 8 Oct 2009
 Linda E. Williamson Officer-In-Charge 3 Mar 2010
 Rebecca H. Duncan Officer-In-Charge 3 May 2010
 Casanova Hambrick 8 May 2010



Type 3
 28 mm Black
 1 Nov 1896
 28 Nov 1905



Type 4
 30.5 mm Black
 Metal Duplex Type H2
 1 Jun 1908
 24 Jun 1924



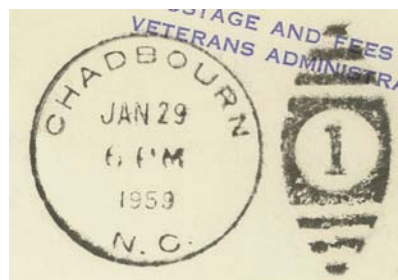
Type 5
 22 mm Black
 American Machine
 Type A14
 14 May 1933
 25 Sep 1936



Type 6
 22.5 mm Black
 International Machine
 Type AT/S 2711
 23 May 1940
 1955



Type 7
 22.5 mm Black
 International Machine
 Type AT/S 2721
 5 Oct 1955
 6 Jun 1958

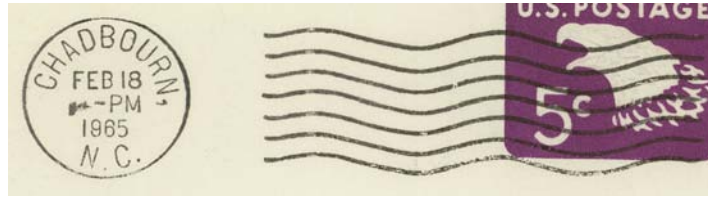


Type 8
 30.5 mm Black
 Metal Duplex Type E2
 20 Jul 1949
 29 Jan 1959

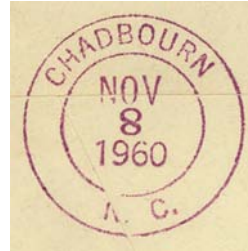
COLUMBUS COUNTY

Chadbourn (Cont.)

(Columbus)



Type 9
21.5 mm Black
International Machine
Type J 30
1 Jan 1960
18 Feb 1965



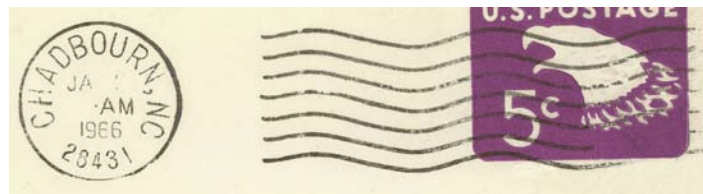
Type 10
29 mm Magenta
8 Nov 1960



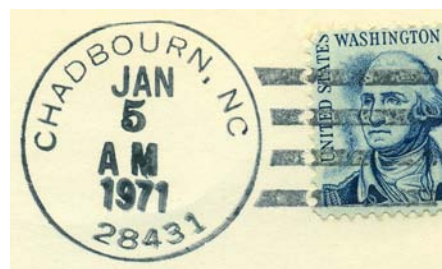
Type 11
33.5 mm Black
1963 Type F/2 4-Bar (28431)
20 Jul 1968



Type 12
21 mm Black
International Machine
Type Hz 30 (28431)
(smaller letters)
4 Jun 1964
25 Aug 1992



Type 13
21 mm Black
International Machine
Type Hz 30 (28431)
16 Nov 1965
6 Sep 1967

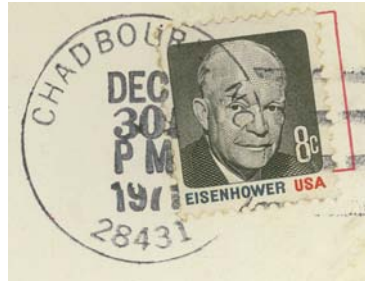


Type 14
32 mm Black
1963 Type F/2 4-Bar (28431)
5 Jan 1971

COLUMBUS COUNTY

Chadbourn (Cont.)

(Columbus)



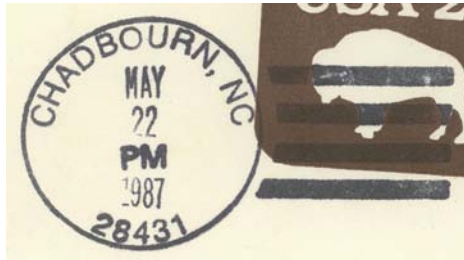
Type 15
32.5 mm Black
1963 Type F/2 4-Bar (28431)
30 Dec 1971
27 Jan 1973



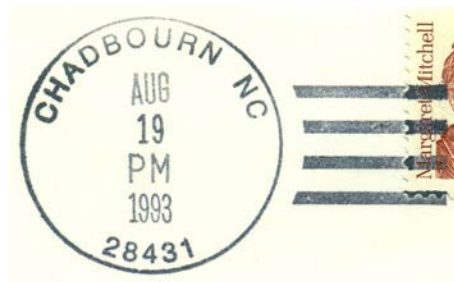
Type 16
28 mm Magenta
25 May 1976



Type 17
21 mm Black
International Machine
Type Hz 26 (28431)
(Chadbourn Strawberry/Festival
of NC/First Weekend in May)
1 Apr 1985
24 Apr 1995



Type 18
31 mm Black
Self-Inking Postmarker
Type 2B (28431)
22 May 1987



Type 19
34.5 mm Black
Self-Inking Postmarker
Type 3A (28431)
19 Aug 1993

COLUMBUS COUNTY

Chadbourn (Cont.)

(Columbus)



Type 20
38.5 mm Black
Self-Inking Postmarker (28431)
11 Sep 2006



Type 21
39 mm Red
Self-Inking Postmarker (28431)
11 Sep 2006

Registered

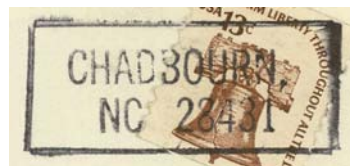


Type 1
28 mm Magenta
1 Oct 1941

Third Class Cancelers



Type 1
45 x 18 mm black
(28431)
197x



Type 2
42 x 17 mm black
(28431)
197x

COLUMBUS COUNTY

Clarendon

(Columbus)

Ferd C. Williamson 13 Feb 1885
 William A. H. Davis 4 Apr 1891
 Thomas McD. Todd 7 Oct 1895
 John W. Joyner 29 Jan 1896
 Mollie E. Harrelson 20 Apr 1907
 James B. Pitman 3 Jul 1920
 Maud H. Pittman, Acting 17 Jan 1932
 Maud H. Pittman 9 May 1932
 Eunice G. Strickland, Acting 31 Dec 1961
 Patricia S. Fipps 1 Apr 1963
 Phyllis Cribb Officer-In-Charge 11 Dec 1998
 Bruce Parnell Officer-In-Charge 1 Feb 1999
 Rudolph Cliff Officer-In-Charge 3 Feb 1999
 Cynthia Nealy Officer-In-Charge 4 Feb 1999
 James Kevin Norris Postmaster 17 Jul 1999
 Martha Thompson Officer-In-Charge 25 May 2001
 Ruth Blanchard Officer-In-Charge 18 Aug 2001
 Joey M. Davis Officer-In-Charge 8 Nov 2002
 Terry D. Benton 8 Mar 2003
 Ruth Blanchard Officer-In-Charge 4 Nov 2004
 Terry D. Rockwell 28 May 2005
 Ruth A. Blanchard Officer-In-Charge 4 Dec 2006
 Ruth A. Blanchard 16 Aug 2008
 Converted to Level 6 (6-hour)
 Remotely Managed post office
 of Tabor City. 10 Jan 2015
 The Postmaster position remained until
 ultimately vacated.



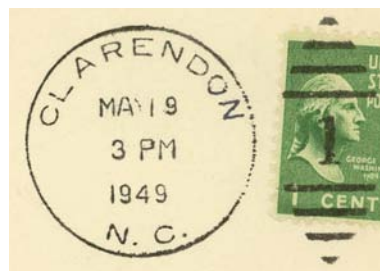
Type 1
 27.5 mm Black
 1 Dec 1900
 6 Nov 1905



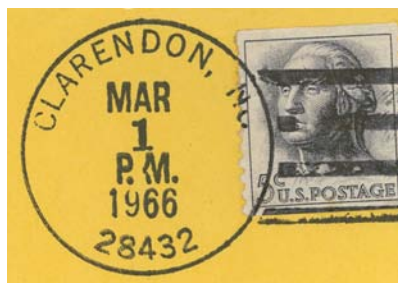
Type 2
 31.5 mm Black
 1906 Type A/1 4-Bar
 26 May 1906
 2 Oct 1907



Type 3
 33 mm Black
 1936 Type F/1 4-Bar
 26 Sep 1944



Type 4
 30 mm Black
 Metal Duplex Type ?
 19 May 1949
 27 Jan 1954

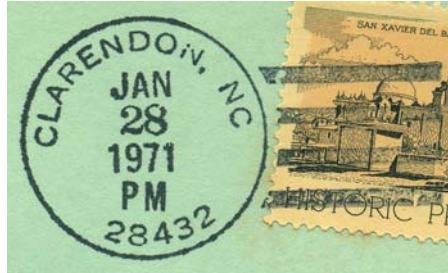


Type 5
 33 mm Black
 1963 Type F/2 4-Bar (28432)
 1 Mar 1966
 30 Jun 1967

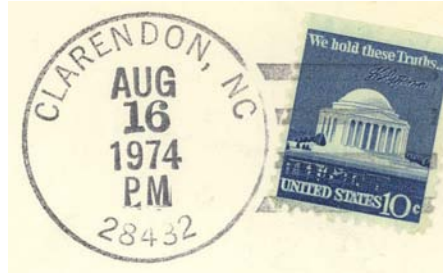
COLUMBUS COUNTY

Clarendon (Cont.)

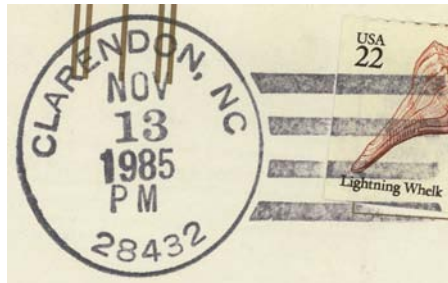
(Columbus)



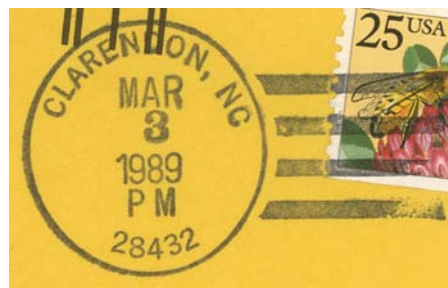
Type 6
32.5 mm Black
1963 Type F/2 4-Bar (28432)
28 Jan 1971



Type 7
32 mm Black
1963 Type F/2 4-Bar (28432)
20 Sep 1974
4 Dec 1978



Type 8
33 mm Black
1963 Type F/2 4-Bar (28432)
13 Nov 1985



Type 9
33 mm Black
1963 Type F/2 4-Bar (28432)
23 Nov 1988
21 Jun 1993



Type 10
37.5 mm Black
Self-Inking Postmarker (28432)
13 Sep 2006

COLUMBUS COUNTY

Clarendon (Cont.)

(Columbus)



Type 11
37.5 mm Red
Self-Inking Postmarker (28432)
13 Sep 2006

Coin

(Columbus)

James High 27 Jul 1898
Discontinued 31 Mar 1903
Papers to Whiteville



Type 1
27 mm Black
30 Mar 1900

Coleman

(Columbus)

Albert B. Coleman 25 Jun 1894
Mittie E. Coleman 28 Jul 1898
Discontinued 31 Dec 1902
Mail to Vineland

Columbus C.H., also known as Whitesville

(Columbus)

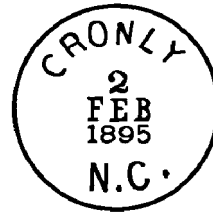
James B. White 25 Mar 1811
William Kemp 1 May 1820
Name changed to **Whiteville** by 1821

COLUMBUS COUNTY

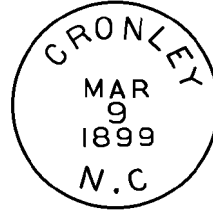
Cronly, Cronley

(Columbus)

Nichols Morris	16 Apr 1883
Stephen Jewett	23 Oct 1883
Henry B. Jewett	28 Apr 1893
May Formy Duval	8 Nov 1897
Hattie B. Jordan	2 Jan 1909
Name changed to Acme	11 Jul 1911



Type 1
27.5 mm Black
2 Feb 1895



Type 2
27.5 mm Black
9 Mar 1899



Type 3
29 mm Black
Doane Type 1-3
16 Dec 1903
12 Mar 1906



Type 4
31 mm Black
1906 Type A/1 4-Bar
16 Mar 1909

Crooms

(Columbus)

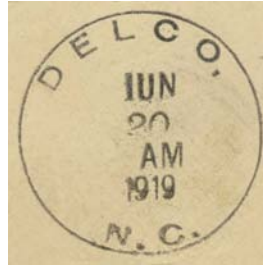
William Strickland	15 Jul 1884
Discontinued	29 Dec 1886
James H. Godwin	7 Feb 1887
Nathan Q. Williamson	30 Jan 1889
William M. Culbreth	17 Apr 1893
William Strickland	16 May 1893
Discontinued	25 Mar 1896
Mail to Fair Bluff	

COLUMBUS COUNTY

Delco, name changed from Newberlin

(Columbus)

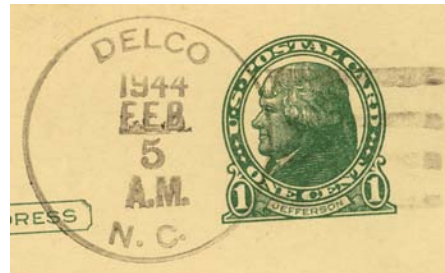
Lillie E. Applewhite	17 Jun 1918
Lorenzo R. Hobbs	18 Dec 1920
Esther H. Bullock, Acting	1 Jul 1945
Esther H. Bullock	7 Aug 1947
Frances K. Ward Officer-In-Charge	27 Dec 1980
Stephen D. Horne	21 Mar 1981
Marie P. Malpass	7 Aug 2004



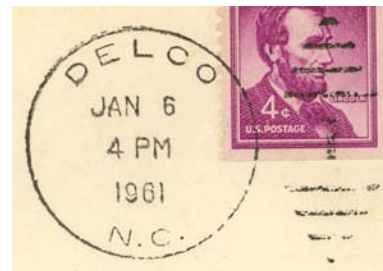
Type 1
31.5 mm Black
1910 Type B 4-Bar
20 Jun 1919



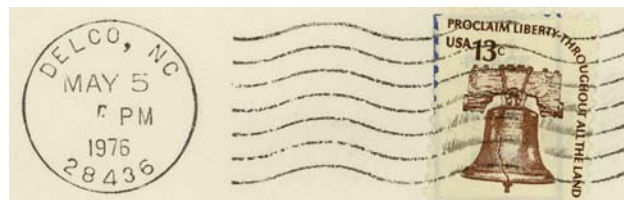
Type 2
32.5 mm Black
1936 Type F/1 4-Bar
21 Aug 1939



Type 3
33 mm Black
1936 Type F/1 4-Bar
5 Feb 1944



Type 4
30 mm Black
Metal Duplex Type ?
7 Nov 1951
12 Nov 1963

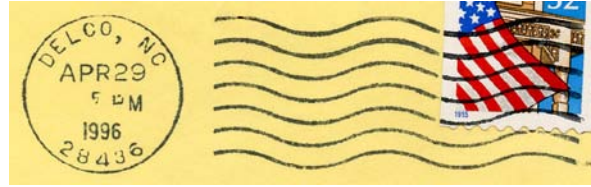


Type 5
22.5 mm Black
International Machine
Type ATS/z 2721 (28436)
21 Jan 1970
14 Jan 1993

COLUMBUS COUNTY

Delco (Cont.)

(Columbus)



Type 6
23 mm Black
International Machine
Type ATS/z 2723 (28436)
27 Jul 1970
29 Apr 1996



Type 7
32.5 mm Black
1963 Type F/2 4-Bar (28436)
14 Dec 1971
13 May 1975



Type 8
34.5 mm Black
1963 Type F/2 4-Bar (28436)
13 May 1983
30 Jan 1985



Type 9
33 mm Black
Self-Inking Postmarker
Type 3A (28436)
20 Aug 1988



Type 10
32.5 mm Black
1963 Type F/2 4-Bar (28436)
17 Dec 1991

COLUMBUS COUNTY

Delco (Cont.)

(Columbus)



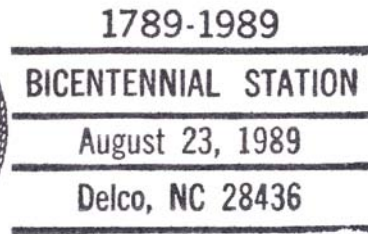
Type 11
35 mm Black
Self-Inking Postmarker (28436)
9 Aug 1996



Type 12
30.5 mm Red
Self-Inking Postmarker (28436)
20 Oct 2006

Temporary Station Cancels

Bicentennial Station



Type 1
87 x 36.5 mm Black
(28436)
23 Aug 1989

Doomore

(Columbus)

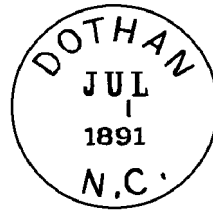
Archibald Toon 14 Jun 1894
Discontinued 8 Feb 1898
Mail to Peacock's Store

COLUMBUS COUNTY

Dothan

(Columbus)

Dillon E. Cox	3 Jul 1890
Headley M. Cox	3 Nov 1904
John N. Cox	22 Aug 1906
George K. Marlowe	27 Nov 1911
Louise C. Marlowe	2 Apr 1919
Walter B. Marlowe(declined)	4 Feb 1925
W. Cleveland Cox	15 May 1925
Ida M. Holme	31 Dec 1932
Mail to Guide	



Type 1
27.5 mm Black
1 Jul 1891
10 Dec 1900



Type 2
28 mm Black
4 Oct 1918

Dulah

(Columbus)

Hannie A. Long	3 Jul 1915
Lolia F. Long	31 Oct 1925
Hannie A. Long, Acting	22 Dec 1927
I. T. Long	28 Mar 1928
Discontinued	31 Jan 1941
Mail to Tabor City	



Type 1
32 mm Black
1910 Type B 4-Bar
30 Oct 1915

Elbow

(Columbus)

Duncan R. Baxley	8 Aug 1894
Robert Jeffrey	12 May 1898
Robert S. Jervay	25 May 1898
Discontinued	15 Apr 1910



Type 1
28 mm Black
9 Jan 1900

COLUMBUS COUNTY

Eoka, formerly Pleasant Plains and White Marsh

(Columbus)

Needham L. Williams	9 Apr 1884
Jacob C. Lee	5 Dec 1884
James P. Hill	18 Nov 1897
C. B. Gore	14 Mar 1902
Discontinued	14 Jun 1902
Papers to Vineland	

Ettie

(Columbus)

George K. Jacobs	26 May 1902
William Ray	7 Aug 1906
Discontinued	29 Jun 1907
Mail to Mollie	

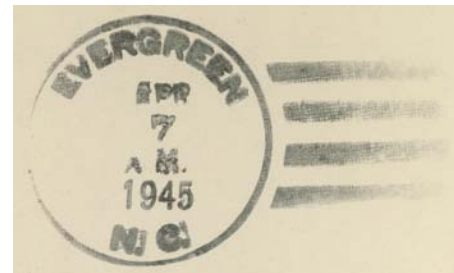
Evergreen

(Columbus)

Ashley M. Benton	31 Jul 1883
Rossie F. Benton	4 Mar 1915
Mamie M. Holloman, Acting	1 Sep 1947
Jewell M. O'Berry	25 Aug 1948
Marguerite Lennon	30 Jun 1973
Marvin McPherson Officer-In-Charge	27 Dec 1986
James H. Singletary	31 Jan 1987
Alvin Hester Officer-In-Charge	10 Mar 1989
Alicie H. Johnson	17 Jun 1989
Rickey Williamson Officer-In-Charge	9 Feb 2004
Joey M. Davis	10 Jul 2004
Lutricia S. Mitchell Officer-In-Charge	11 Dec 2012
Converted to a Level 6 (6-hour)	
Remotely Managed post office of	
Fairmont	23 Feb 2013



Type 1
33 mm Black
1931 Type C/2 4-Bar
26 Jan 1938
20 Sep 1939



Type 2
33 mm Black
1936 Type F/1 4-Bar
7 Apr 1945

COLUMBUS COUNTY

Evergreen (Cont.)

(Columbus)



Type 3
32.5 mm Black
1936 Type F/1 4-Bar
23 Aug 1949
12 Dec 1949



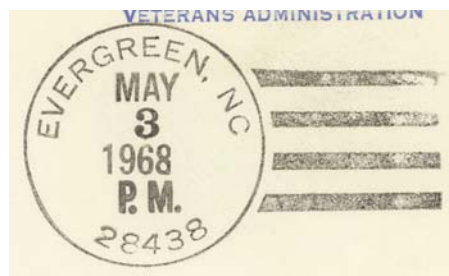
Type 4
34 mm Black
1936 Type F/1 4-Bar
16 Feb 1954



Type 5
34 mm Black
1936 Type F/1 4-Bar
21 Jun 1955



Type 6
35.5 mm Black
25 Sep 1961



Type 7
32 mm Black
1963 Type F/2 4-Bar (28438)
8 May 1968
3 May 1968

COLUMBUS COUNTY

Evergreen (Cont.)

(Columbus)



Type 8
32 mm Black
1963 Type F/2 4-Bar (28438)
14 Sep 1970
19 Feb 1975



Type 9
33.5 mm Black
1963 Type F/2 4-Bar (28438)
24 Sep 1976
10 Nov 1978



Type 10
31 mm Black
Self-Inking Postmarker
Type 2B (28438)
27 Nov 1985
17 Aug 1987



Type 11
31 mm Black
Self-Inking Postmarker
Type 2A (28438)
24 Dec 1986
13 Jan 1989



Type 12
33.5 mm Black
1963 Type F/2 4-Bar (28438)
6 Jun 1989
30 Jan 1997

COLUMBUS COUNTY

Evergreen (Cont.)

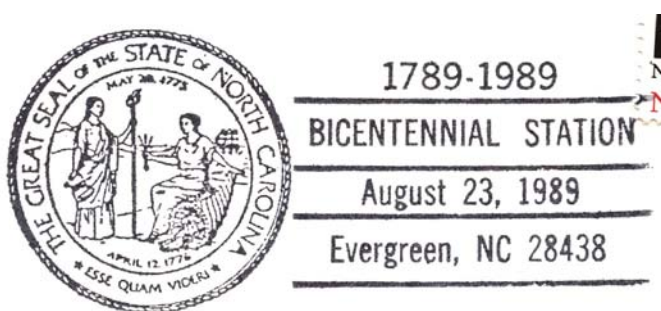
(Columbus)



Type 13
35 mm Black
Self-Inking Postmarker
Type 1A (28438)
20 May 1995

Temporary Station Cancels

Bicentennial Station



Type 1
84.5 x 37.5 mm Black
(28438)
23 Aug 1989

Fair Bluff, Fairbluff

(Columbus)

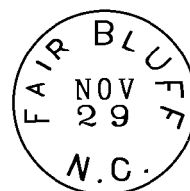
John MacGill	1 Jul 1815
John MacKay	8 Jun 1819
Spelled Fairbluff	1827 ledger
Archibald MacKay	14 Feb 1828
Augustus Smith	11 Sep 1832
Spelled Fair Bluff	1844 ledger
Alva Smith	13 Mar 1844
Burrel Smith	22 Aug 1853
William H. Smith	25 Mar 1854
Benjamin M. Williams	9 Jun 1854
Edward W. Halidy	7 Oct 1854
James L. Mills	7 Nov 1856
John G. Powell	11 Dec 1857
Henry Coleman	17 Feb 1859
J. H. Derham, CSA	27 Aug 1861
Edmon D. Williams, CSA	Bibliog. #19
CSA office closed on or before	25 Apr 1865
Joshua Waddell	21 Feb 1866
John B. Waddell	2 Oct 1885
Joseph B. Waddell	20 Oct 1885
Thomas M. Smith	1 Aug 1889
Joseph B. Waddell	12 Aug 1893
Oliver H. Lennon	28 Aug 1897
Francis A. Tucker	4 Mar 1899
Rosalie A. Tucker	2 Nov 1909
Ruth W. Rogers	10 May 1915

Fair Bluff

Manuscript
4 Dec 1839



Manuscript
20 Sep 1876



Type 1
24 mm Black
29 Nov 187x

COLUMBUS COUNTY

Fair Bluff, Fairbluff (Cont.)

(Columbus)

Rosco C. Tucker, Acting	10 Sep 1921
Rosco C. Tucker	24 Sep 1921
Alexander E. Waller, Acting	12 Feb 1934
Alexander E. Waller	16 Jan 1935
Sara B. Leek, Acting	22 Apr 1955
Leonard R. Oldham	16 May 1957
Betty F. Carpenter Officer-In-Charge	2 May 1986
Carolyn C. Elvington	30 Aug 1986
Ray Carstens Officer-In-Charge	11 Feb 1999
Alan D. Harrelson Officer-In-Charge	30 Aug 1999
Janice S. Strickland	20 Nov 1999
Harriett Epps Officer-In-Charge	6 Jun 2002
Harriett Epps	24 Aug 2002
Converted to a Level 6 (6-hour)	
Remotely Managed post office of Tabor City	10 Jan 2015



Type 2
25 mm Black
19 Nov 187x



Type 3
28 mm Black
11 Mar 1893
27 May 1898



Type 4
28 mm Black
Metal Duplex Type H2
6 Oct 1900
27 Nov 1905



Type 5
31 mm Black
Doane Type 3-5
21 May 1906
9 Jan 1912

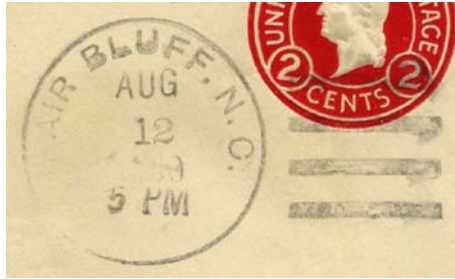


Type 6
32.5 mm Black
1910 Type B 4-Bar
4 Dec 1912
23 Nov 1921

COLUMBUS COUNTY

Fair Bluff, Fairbluff (Cont.)

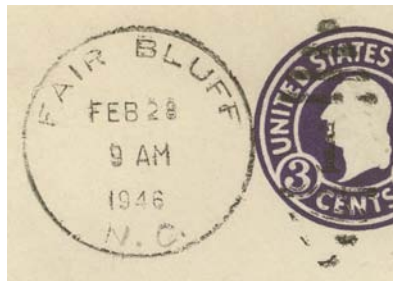
(Columbus)



Type 7
32 mm Black
1930 Type E 4-Bar
12 Aug 1930



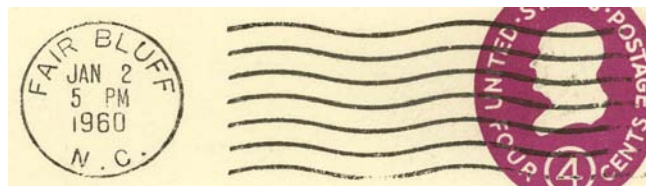
Type 8
34 mm Black
1931 Type C/2 4-Bar
8 Apr 1935
24 Feb 1937



Type 9
30.5 mm Black
Metal Duplex Type ?
28 Feb 1946
8 Dec 1955



Type 10
30 mm Magenta
19 Jan 1950



Type 11
21.5 mm Black
Universal Machine
Type DT 200
6 Jan 1951
21 Aug 1963

COLUMBUS COUNTY

Fair Bluff, Fairbluff (Cont.)

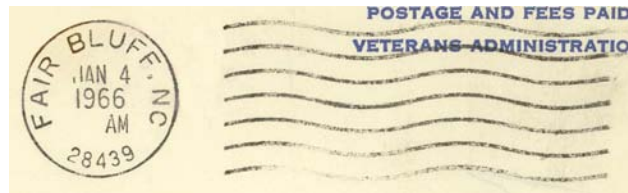
(Columbus)



Type 12
30 mm Magenta
26 Sep 1958



Type 13
35.5 mm Black
14 Sep 1961



Type 14
20.5 mm Black
Universal Machine
Type DTS/z 200 (28439)
4 Jan 1966
14 Jun 1968



Type 15
21 mm Black
International Machine
Type Hz 400 (28439)
(Pray For Peace)
26 May 1970
3 Aug 1973



Type 16
21 mm Black
International Machine
Type Hz 30 (28439)
5 Sep 1974
30 Apr 1996



Type 17
32 mm Black
1963 Type F/2 4-Bar (28439)
8 Nov 1979

COLUMBUS COUNTY

Fair Bluff, Fairbluff (Cont.)

(Columbus)



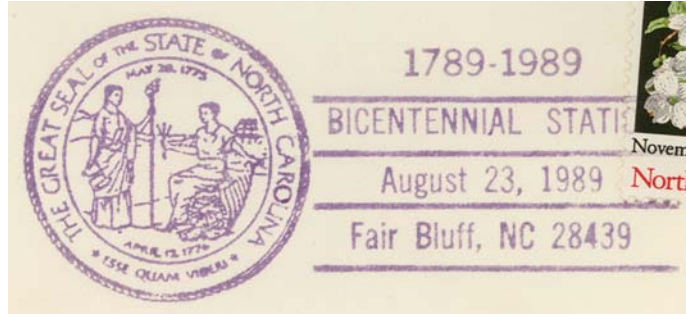
Type 18
33.5 mm Black
1963 Type F/2 4-Bar (28439)
9 Sep 1988
13 Nov 1996



Type 19
33.5 mm Red
Self-Inking Postmarker
(28439-9998)
3 Nov 2006

Temporary Station Cancels

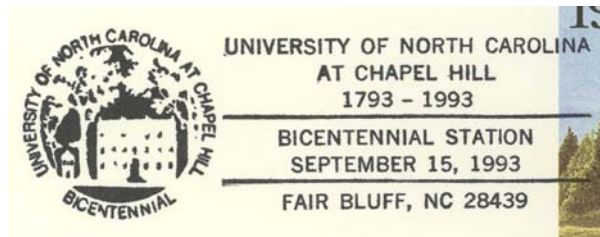
Bicentennial Station



Type 1
87 x 37 mm Purple
(28439)
23 Aug 1989

86.5 x 37.5 mm Black
(28439)
23 Aug 1989

UNC Bicentennial Station



Type 1
75 x 25 mm Black
(28439)
15 Sep 1993

COLUMBUS COUNTY

Farmer's Turnout, from Brunswick County

(Columbus)

Alexander Murrill	1877
William H. Alderman	9 Dec 1878
Erasmus J. Carter	24 Feb 1879
Moved to Brunswick County	22 Mar 1883

Flemington

(Columbus)

Charles Chancey	20 May 1868
Charles O. Beers	2 Feb 1869
Name changed to Lake Waccamaw	19 Oct 1883

Flemington N.C.
Aug 9th 1871

Manuscript
24 Jun 1870
9 Aug 1871



Type 1
27 mm Black
8 Aug 1883

Freeman

(Columbus)

Joseph B. Brinkley	19 Apr 1886
Name changed to Mitchell	13 Feb 1894
Discontinued	25 Sep 1894
Mail to Byrdsville	
Elisha J. Grimsley	2 Aug 1901
Andrew H. Lennon, Jr.	11 Mar 1911
Adron B. Creech (declined)	no date
Discontinued	31 Oct 1931
Mail to Bolton	



Type 1
28.5 mm Black
24 Aug 1906
24 Sep 1909

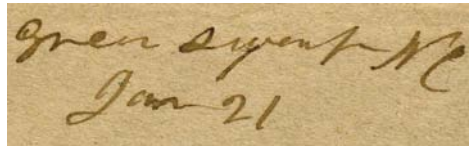
COLUMBUS COUNTY

Green Swamp

(Columbus)

James Freshwater	18 Oct 1855
Kelly Baldwin	1 Jun 1858
William Q. Maulsby	12 Mar 1859
F. M. Pate	11 Jun 1859
Daniel M. Hobbs	12 Feb 1861
D. M. Hobbs, CSA	3 Jul 1861
Frederick J. Simpson, CSA	Bibliog. #19
Henry Mitchell, CSA	Bibliog. #19
CSA office closed on or before	30 Apr 1865
Federal office discontinued	11 Dec 1866

Confederate



Manuscript
21 Jan 1863

Grists

(Columbus)

David Struthers	13 May 1892
James Struthers	11 Jun 1901
William Struthers	26 Feb 1904
James M. Smith	29 Jun 1912
Hugh L. Struthers	18 Aug 1919
Discontinued	14 May 1921
Mail to Chadbourn	



Type 1
28 mm Black
10 Mar 1898
8 Apr 1900



Type 2
31 mm Purple
1906 Type A/1 4-Bar
5 Oct 1910



Type 3
32 mm Black
1910 Type B 4-Bar
18 Nov 191x

COLUMBUS COUNTY

Grist's Station, Grist Station

(Columbus)

David Struthers	7 Jun 1866
Mills M. Walker	31 Mar 1868
John B. Blake	2 Jul 1869
Francis Roberts	20 Sep 1869
Miss M. A. Baker	11 Apr 1871
John D. Walker	21 Feb 1872
James W. Powell	18 May 1874
John T. Pridgen	11 Nov 1874
Mills M. Walker	22 Nov 1875
Spelled Grist Station	in 1889 ledger
Discontinued	17 Mar 1892
Mail to Chadbourn	

Guide

(Columbus)

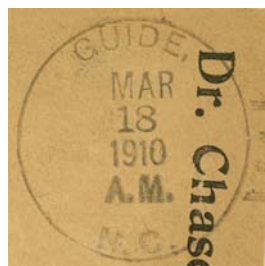
George C. Cox	1 Apr 1901
Sina B. Cox	15 Sep 1905
Discontinued	15 Feb 1933
Mail to Tabor	



Type 1
29 mm Black
25 May 1901
12 Feb 1902



Type 2
28 mm Black
Doane Type 2-?
31 May 1906
23 Apr 1907



Type 3
31 mm Black
1908 Type A/2 4-Bar
18 Mar 1910
25 Mar 1910

COLUMBUS COUNTY


Gum Swamp

(Columbus)

John Mears Discontinued	29 Aug 1837 4 Aug 1853	<i>Gum Swamp N.C.</i>	Manuscript 1846 1851
----------------------------	---------------------------	-----------------------	----------------------------




Haddock

(Columbus)

Andrew J. Mills William P. Harrelson Everate M. Smith Manuel Wright Council Mears (declined) Sumpter Richardson Doctor F. Wright Francis M. Sherman John J. Hughes Discontinued Mail to Lebanon	21 Oct 1889 2 May 1892 25 Nov 1893 10 Feb 1894 6 Aug 1897 17 Nov 1897 26 Aug 1898 30 Apr 1901 18 Feb 1903 30 Apr 1903		Type 1 27 .5 mm Black 16 Jul 1892 16 Jul 1895
---	--	--	--

Hallsboro, name changed from Bogue

(Columbus)

John W. Hall Samuel B. Hall Florence M. Hall John W. Hall James A. Wyche, Acting James A. Wyche August D. Wessell, Acting August D. Wessell Mildred C. Thompson, Acting Mildred C. Thompson Ray B. Wyche, Acting Ray B. Wyche Tony Desa Officer-In-Charge William J. McFarland Paulette P. Stephens Officer-In-Charge David E. Mincey Beverly Sue Harrell Officer-In-Charge Beverly Sue Harrell Linda F. Tyler Officer-In-Charge Converted to a Level 6 (6-hour) Remotely Managed post office of Lake Waccamaw	31 Mar 1884 27 Apr 1887 16 Apr 1901 2 Feb 1906 1 May 1923 19 Dec 1923 27 Jun 1933 19 Aug 1933 28 Dec 1944 4 Feb 1946 30 Apr 1954 10 Jun 1955 3 Aug 1984 10 Nov 1984 7 Oct 1986 31 Jan 1987 29 Oct 2007 21 Jun 2008 17 Oct 2012 23 Feb 2013	  	Type 1 27 mm Black 27 Oct 188x Type 2 28 mm Black 25 Mar 189x Type 3 28.5 mm Black 1 Dec 1904
---	---	--	---

COLUMBUS COUNTY

Hallsboro (Cont.)

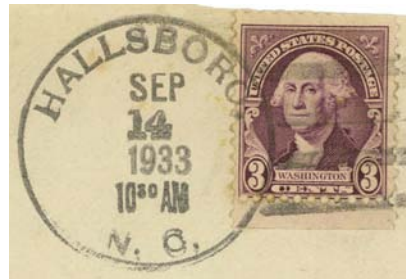
(Columbus)



Type 4
31 mm Black
1906 Type A/1 4-Bar
23 Jun 1908



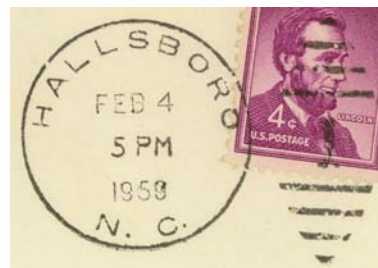
Type 5
33 mm Black
1910 Type B 4-Bar
21 Jan 1919



Type 6
33.5 mm Black
1931 Type C/2 4-Bar
14 Sep 1933



Type 7
34 mm Black
1936 Type F/1 4-Bar
25 Oct 1941



Type 8
30 mm Black
Metal Duplex Type ?
4 Feb 1959
1 Jul 1963

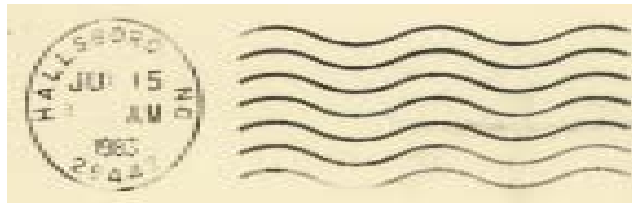
COLUMBUS COUNTY

Hallsboro (Cont.)

(Columbus)



Type 9
33 mm Black
1963 Type F/2 4-Bar (28442)
27 Jul 1970
4 Dec 1974



Type 10
23 mm Black
International Machine
Type ATS/z 2723 (28442)
15 Jun 1983
15 Jul 1983



Type 11
34 mm Black
Self-Inking Postmarker
Type 3A (28442)
9 Sep 1988
21 Feb 1989



Type 12
32.5 mm Black
1963 Type F/2 4-Bar (28442)
27 Aug 1990
8 Oct 1993



Type 13
30.5 mm Red
Self-Inking Postmarker (28442)
14 Nov 2006

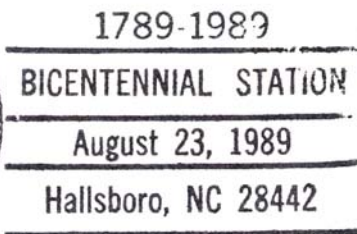
COLUMBUS COUNTY

Hallsboro (Cont.)

(Columbus)

Temporary Station Cancels

Bicentennial Station

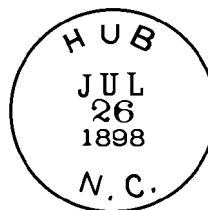


Type 1
85 x 37 mm Black
(28442)
23 Aug 1989

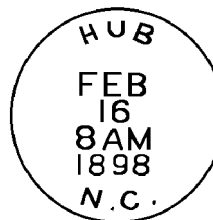
Hub, name changed from Lyons

(Columbus)

William H. Butters 8 Jan 1891
Birdis Anderson 2 Dec 1897
Name changed to **Boardman** 12 Apr 1899



Type 1
28 mm Black
22 Aug 1893
26 Jul 1898



Type 2
28 mm Black
17 Aug 1896
16 Feb 1898

Iron Hill

(Columbus)

James C. Wright 1 Sep 1875
William A. Inman 23 Nov 1897
Comadore M. Soles 16 Mar 1901
Maggie E. Wright 2 Apr 1903
Discontinued 15 Sep 1904
Mail to Tabor

COLUMBUS COUNTY

Isadora

(Columbus)

Purdie Smith	8 Feb 1890
Rescinded	16 Jul 1893

Ivy's Bluff

(Columbus)

J. McColskey	19 May 1847
Cornelius McCloskey	14 Sep 1847
Discontinued	4 Sep 1849

Josephine

(Columbus)

William J. Walters	15 Feb 1902
Order rescinded	15 Apr 1902
Mail to Dothan	

Kingville

(Columbus)

Asa C. Faulk	16 Jan 1892
S. M. Anderson	23 Jan 1896
Discontinued	6 Nov 1896

COLUMBUS COUNTY

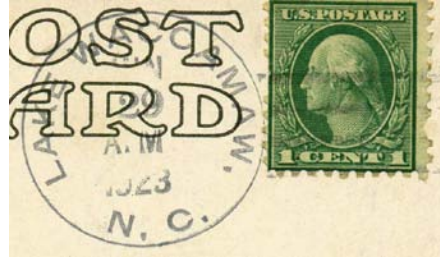
Lake Waccamaw, name changed from Flemington

(Columbus)

Charles O. Beers	19 Oct 1883
Francis B. Gault	13 Aug 1910
Payton R. Horne	27 Aug 1921
Eula H. Horne, Acting	18 Sep 1938
Eula H. Horne	16 Feb 1940
Katie C. Wayne, Acting	9 Jan 1943
Katie C. Wayne	14 Apr 1944
Christine O. Pate, Acting	8 Jul 1947
Christine O. Pate	20 Jul 1949
William J. Sullivan	30 May 1981
Louis S. Holden Officer-In-Charge	23 Dec 1982
Beatrice C. Squires	19 Mar 1983
Melanie Teague Officer-In-Charge	
Kathryn S. Ivey Officer-In-Charge	24 Apr 1985
John E. Oliver	9 Nov 1985
Elsie W. Dewless Officer-In-Charge	3 Jan 1989
James H. Singletary	11 Mar 1989
Alvin G. Hester Officer-In-Charge	25 Jul 1997
Kevin Norris Officer-In-Charge	24 Nov 1997
Alan Harrelson Officer-In-Charge	23 Mar 1998
Betty M. McCarthy Officer-In-Charge	4 Aug 1998
Betty M. McCarthy	16 Jan 1999
Victor Matthews Officer-In-Charge	15 Feb 2005
Cathy Thornton Officer-In-Charge	3 Aug 2005
Victor Matthews Officer-In-Charge	29 Nov 2005
Linda S. Morrison	10 Dec 2005
Victor Matthews Officer-In-Charge	31 Jan 2008
Michelle A. Medwedeff	5 Jul 2008
Victor Matthews Officer-In-Charge	
Nancy H. Applewhite	30 Jun 2012



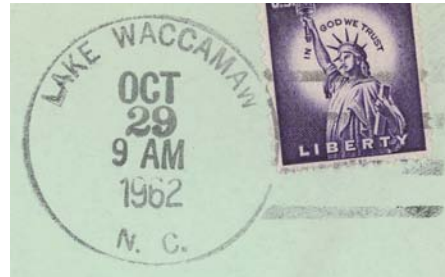
Type 1
28 mm Black
Doane Type 2-?
8 Oct 1904



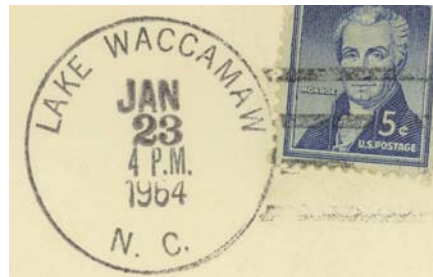
Type 2
31.5 mm Black
1908 Type A/2 4-Bar
29 Jun 1923



Type 3
34.5 mm Black
1936 Type F/1 4-Bar
3 Feb 1950
22 Nov 1955



Type 4
33 mm Black
1936 Type F/1 4-Bar
4 Apr 1962
29 Oct 1962

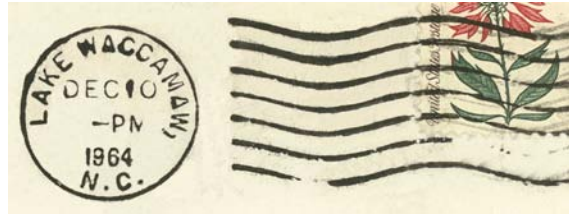


Type 5
33.5 mm Black
1936 Type F/1 4-Bar
23 Jan 1964
8 Mar 1965

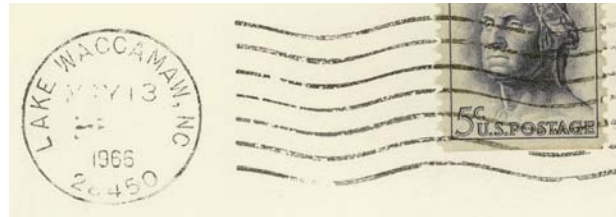
COLUMBUS COUNTY

Lake Waccamaw (Cont.)

(Columbus)



Type 6
23.5 mm Black
International Machine
Type AT/S 2711
10 Dec 1964



Type 7
23.5 mm Black
International Machine
Type ATS/z 2711 (28450)
25 Jan 1966
8 Jan 1970



Type 8
33 mm Black
1963 Type F/2 4-Bar (28450)
25 Jan 1971
2 Apr 1975



Type 9
32 mm Black
1963 Type F/2 4-Bar (28450)
4 Aug 1975
12 Nov 1985



Type 10
20.5 mm Black
Universal Machine
Type DTS/z 200 (28450)
30 Nov 1988
5 May 1989

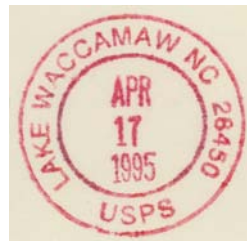
COLUMBUS COUNTY

Lake Waccamaw (Cont.)

(Columbus)



Type 11
32 mm Black
Self-Inking Postmarker
Type 2A (28450)
17 Apr 1995
18 Jun 1997



Type 12
29 mm Red
Self-Inking Postmarker
Double Circle (28450)
17 Apr 1995



Type 13
37 x 35 mm Black
Self-Inking Postmarker (28450)
1 Sep 2001
12 Jul 2008



Type 14
30.5 mm Red
Self-Inking Postmarker (28450)
4 Dec 2006

Temporary Station Cancels

Bicentennial Station



1789-1989
BICENTENNIAL STATION
August 23, 1989
Lake Waccamaw, NC 28450

Type 1
85.5 x 37.5 mm Black
(28450)
23 Aug 1989

COLUMBUS COUNTY

Lebanon

(Columbus)

Charley A. Harp	16 Jun 1875
Albert W. Buffkin	26 May 1879
Discontinued	8 Jul 1880
George L. Stewart	23 Sep 1880
John B. Skipper	29 May 1886
William V. Sellers	22 Jun 1887
Discontinued	6 Oct 1890
Mail to Haddock	
James M. Harper	22 Apr 1891
John K. Harper	25 May 1894
John B. Skipper	15 Jun 1896
Aaron A. Gore	28 Nov 1896
George L. Stewart	23 May 1898
Discontinued	15 Apr 1905
Mail to Clarendon	



Type 1
28.5 mm Black
9 Apr 1895



Type 2
27.5 mm Black
23 Jun 1899

Lennon

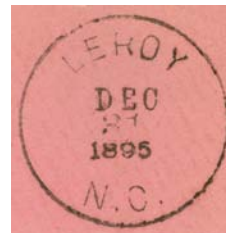
(Columbus)

Ira Lennon	4 Dec 1883
Discontinued	16 Nov 1887
Mail to Orton	

Leroy, name changed from Meritts

(Columbus)

Esaw Nealey	18 Jul 1892
Haynes Hinson	24 Mar 1896
Lucy M. Nealey	23 Nov 1899
Discontinued	14 Feb 1901
Mail to Lebanon	



Type 1
27.5 mm Black
31 Dec 1895

COLUMBUS COUNTY

Levingston

(Columbus)

Walter R. Bordeaux 4 Mar 1904
Discontinued 31 Oct 1904
Mail to Robeson

Lockhaven, from Brunswick County

(Columbus)

Lloyd C. McCoy 17 Sep 1902
Discontinued 14 Feb 1903

Lyons

(Columbus)

William H. Butters 12 Nov 1890
Name changed to **Hub** 8 Jan 1891

Merritts

(Columbus)

Macon M. Meritt 20 Jul 1886
Esaw Nealy 14 Aug 1891
Name changed to **Leroy** 18 Jul 1892



Type 1
27 mm Black
8 May 1891

COLUMBUS COUNTY

Mitchell, name changed from Freeman

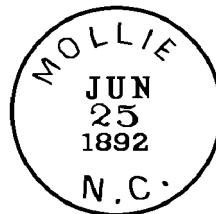
(Columbus)

Calvin J. Mitchell 13 Feb 1894
 Discontinued 25 Sep 1894
 Discontinued before Mitchell bonded
 Never in operation

Mollie

(Columbus)

Jonathan M. D. Long 18 Feb 1890
 George M. Hardie 13 Jul 1891
 James G. Stanly 18 Dec 1895
 James I. Hardy 12 May 1898
 John B. Long 26 Sep 1901
 Lenoar V. Long 20 Oct 1906
 Elneda Long, Acting 1 Oct 1930
 Elneda Long 4 Nov 1930
 Discontinued 28 Feb 1931
 Mail to Clarendon



Type 1
 28 mm Black
 25 Jun 1892



Type 2
 27.5 mm Black
 21 Oct 1897

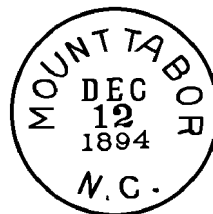


Type 2
 31.5 mm Black
 1908 Type A/2 4-Bar
 25 Sep 1918

Mount Tabor

(Columbus)

Charles H. Inman 13 Feb 1885
 Viola W. Boswell 13 Oct 1893
 Name changed to **Tabor** 15 Jun 1895



Type 1
 27.5 mm Black
 12 Dec 1894

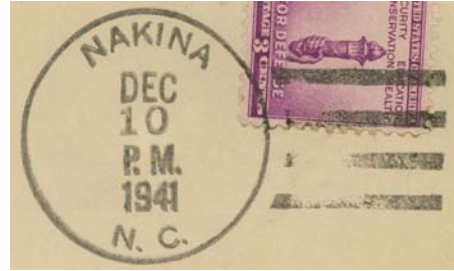
COLUMBUS COUNTY

Nakina

(Columbus)

Warren L. Piggott*	20 Jul 1916
James B. Reeves	10 May 1926
Sallie E. Gore, Acting	28 Jun 1929
Sallie E. Gore	20 Jul 1929
Leamon C. Ward, Acting	17 Aug 1933
Leamon C. Ward	17 Oct 1933
Doris W. Butler, Acting	28 Feb 1964
William R. Ray	25 May 1965
Wanda C. Thompson Officer-In-Charge	26 Jan 1999
Wanda C. Thompson	28 Aug 1999
Tawanda Wilkerson Officer-In-Charge	31 Jan 2014
Converted to Level 6 (6-hour) Remotely Managed post office of Whiteville	3 May 2014

*Name spelled Piggatt in official records



Type 1
33 mm Black
1936 Type F/1 4-Bar
10 Dec 1941
30 May 1944



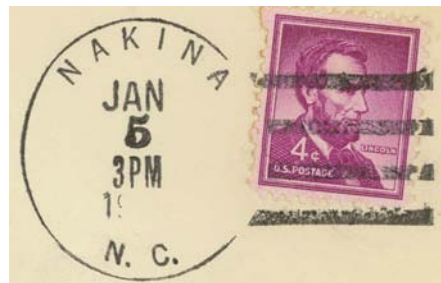
Type 2
33 mm Black
1936 Type F/1 4-Bar
12 Sep 1944



Type 3
31 mm Black
Metal Duplex Type ?
12 Apr 1950
28 Dec 1951



Type 4
29.5 mm Magenta
28 Dec 1951



Type 5
33.5 mm Black
1936 Type F/1 4-Bar
5 Jan 195x or 196x

COLUMBUS COUNTY

Nakina

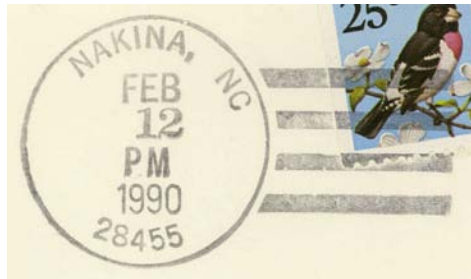
(Columbus)



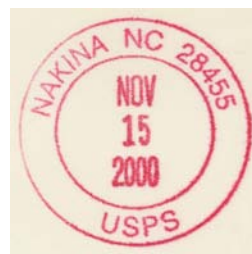
Type 6
31.5 mm Black
Hanley hand-held roller
2 Apr 1963
13 May 1964



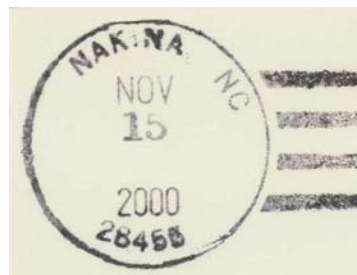
Type 7
34 mm Black
1963 Type F/2 4-Bar (28455)
18 Oct 1965
26 Mar 1985



Type 8
33 mm Black
1963 Type F/2 4-Bar (28455)
16 Feb 1989
20 May 1995



Type 9
30 mm Red
Self-Inking Postmarker
(28455)
15 Nov 2000



Type 10
32 mm Black
1963 Type F/2 4-Bar (28455)
15 Nov 2000

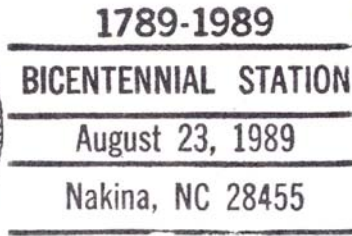
COLUMBUS COUNTY

Nakina

(Columbus)

Temporary Station Cancels

Bicentennial Station



Type 1
85.5 x 37 mm Black
(28455)
23 Aug 1989

Nettie

(Columbus)

William W. Brown	21 Feb 1902
Discontinued	30 Jun 1902
Mail to Cerro Gordo	

Newberlin, name changed from Robeson

(Columbus)

Walter R. Bordeaux	16 Apr 1907
Melton A. Bordeaux	24 Dec 1908
Lillie E. Applewhite	28 Apr 1914
Name changed to Delco	17 Jun 1918



Type 1
31.5 mm Black
1908 Type A/2 4-Bar
25 Mar 1909



Type 1
31.5 mm Black
1910 Type B 4-Bar
22 Jul 1913

COLUMBUS COUNTY

Old Dock

(Columbus)

Henry W. Long	6 Oct 1881
Laura E. Thompson	8 Sep 1885
Margaret C. Marlow	7 Aug 1897
George F. Coleman	20 Aug 1898
Charles W. Suggs	3 May 1901
Laura E. Thompson	7 Aug 1901
Wilson M. Suggs	11 Apr 1905
William J. Simmons	12 Nov 1929
Hattie Purvis Suggs, Acting	8 May 1935
Hattie Purvis Suggs	14 Jun 1935
Discontinued	15 Mar 1943
Mail to Nakina	

Old Dock n c
8-28-94

Manuscript
28 Aug 1894



Type 1
34 mm Black
1931 Type C/2 4-Bar
20 Apr 1936
26 Jun 1940

Olyphic

(Columbus)

Vance B. Gore	19 Sep 1923
Harvey L. Smith, Acting	15 May 1931
Harvey L. Smith	17 Jun 1931
Discontinued	31 Mar 1949
Mail to Tabor City	



Type 1
31 mm Purple
1923 Type A/3 4-Bar
4 Apr 1930



Type 2
33 mm Black
1925 Type C/1 4-Bar
8 Feb 1940
19 May 1941

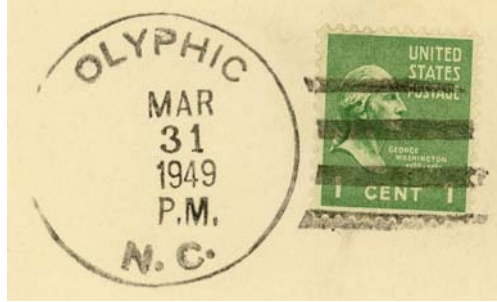


Type 3
32.5 mm Black
1936 Type F/1 4-Bar
14 May 1945

COLUMBUS COUNTY

Olyphic (Cont.)

(Columbus)



Type 4
36 mm Black
Non-standard 4-Bar
31 Mar 1949

Orton

(Columbus)

Haynes Lennon 23 Aug 1883
James E. Porter 5 May 1898
Discontinued 13 Feb 1904
Mail to Whiteville

Oxmoore

(Columbus)

Annie H. Troy 24 Aug 1898
Discontinued 12 Apr 1899
Mail to Clarkton, Bladen County
Lela High 10 Jan 1900
Discontinued 31 Mar 1903
Mail to Whiteville

Peacock's Store

(Columbus)

Lovet Peacock 22 Jun 1854
Arthur T. Wiggs 24 Jan 1861
Arthur T. Wiggs, CSA 6 Jul 1861
Samuel B. Jennings, CSA Bibliog. #19
CSA office discontinued 6 Jan 1862
Enoch Hannon 10 Jan 1866
John N. Hayes or Hay 24 Apr 1873
Discontinued 14 Feb 1906
Mail to Whiteville



Type 1
28 mm Black
31 Mar 1894

COLUMBUS COUNTY

Pireway Ferry, Pireway

(Columbus)

John Mills, Jr.	6 Jul 1855
Discontinued	14 May 1856
James M. Cooke	18 May 1869
Moses Williams	21 Apr 1875
Forney Spivey	19 Feb 1877
Joseph M. Griffin	16 Oct 1878
William P. Griffin	12 Nov 1879
E. W. Fowler	8 Jul 1880
John Hampton Johnson	5 Jun 1882
Name changed to Pireway	11 Oct 1882
John H. Johnson	11 Oct 1882
Isaac Long, Sr.	23 Apr 1883
Samuel H. Thomas	14 May 1883
Ferdinand C. Williamson	24 Mar 1896
John G. Butler	28 Nov 1896
Robert C. Gore	19 Nov 1898
Joseph F. Butler, Jr.	24 Mar 1902
John G. Butler	3 Jun 1907
Joseph P. Gore	24 Feb 1909
John G. Butler	27 Aug 1913
Clarence M. Gore	19 Sep 1914
Cephus F. Gore	7 Sep 1917
Joseph P. Gore, Acting	2 Jul 1924
Joseph P. Gore	20 Sep 1924
Lacy Carlton Stanley	21 Aug 1933
Discontinued	15 Dec 1933
Mail to Bughill	



Type 1
27 mm Black
5 Apr 1889



Type 2
28.5 mm Black
Doane Type 2-?
13 Jun 1906
27 Jul 1907



Type 3
31 mm Black
1910 Type B 4-Bar
14 Mar 1910

Pleasant Plain, Pleasant Plains, formerly White Marsh

(Columbus)

George W. Hill	9 Aug 1856
Discontinued	12 Mar 1861
John D. Williams, Jr., CSA	Bibliog. #19
CSA office closed on or before	30 Apr 1865

Pocosin

(Columbus)

Melton Campbell	10 Nov 1891
Daniel M. Hobbs	11 Sep 1897
John W. Carroll	23 May 1905
William B. Hobbs	3 Oct 1905
Discontinued	15 Oct 1907
Mail to Council	

COLUMBUS COUNTY

Porter's Swamp

(Columbus)

Lot Williamson 13 Dec 1837
Discontinued 25 Jun 1846

Prong

(Columbus)

William D. Wooten 15 Jul 1889
Discontinued 21 Apr 1898
Willie N. Jordan 24 Jun 1898
Discontinued 30 Apr 1903
Mail to Clarkton, Bladen County

Record

(Columbus)

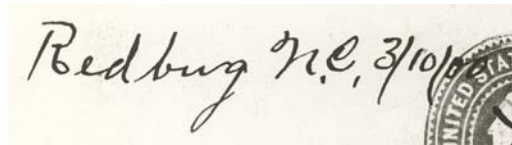
Rufus D. Mooney 22 Jan 1892
J. M. Little 13 Jul 1899
Discontinued 15 Dec 1899
Mail to Makatoka, Brunswick County

* Record was a logging camp in the vast Green Swamp

Redbug

(Columbus)

Mary M. Wyche 4 Jan 1900
Discontinued 15 May 1914
Mail to Hallsboro



Manuscript
10 Mar 1900

COLUMBUS COUNTY

Rex

(Columbus)

M. P. Stanly 28 Jun 1890
 Discontinued 3 Jul 1891
 No papers

Rico

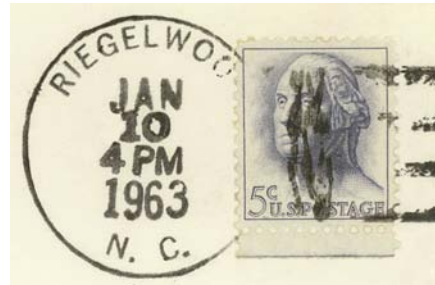
(Columbus)

James S. Elkins 16 Jun 1900
 Joseph M. Smith 17 Feb 1902
 Discontinued 31 Jan 1907
 Mail to Clarkton, Bladen County

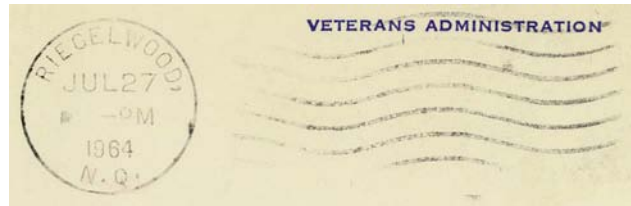
Riegelwood, name changed from Acme

(Columbus)

Ruth M. Butler	2 Jan 1963
Allison O. Burns, Acting	9 Jul 1963
Allison O. Burns	1 Oct 1964
Muriel M. Culbreth	16 Feb 1986
Clyde E. Faircloth, Jr. Officer-In-Charge	25 Apr 1988
Jane P. (Phelps) Wardenfelt	2 Jul 1988
Marie P. Malpass Officer-In-Charge	5 Apr 1991
Rosemary Kenney	29 Jun 1991
Lela Robinson Officer-In-Charge	15 Jun 1999
Cathy Green Officer-In-Charge	16 Nov 1999
George Young Officer-In-Charge	9 Dec 1999
Debbie B. Honeycutt	18 Nov 2000
Deborah Chadwick Officer-In-Charge	27 Dec 2001
Terry Rockwell Officer-In-Charge	23 Apr 2002
Rashad J. Roberts	13 Jul 2002



Type 1
 33 mm Black
 1936 Type F/1 4-Bar
 10 Jan 1963

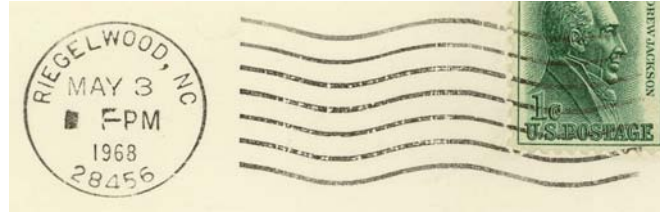


Type 2
 23 mm Black
 International Machine
 Type AT/S 2711
 3 Dec 1963
 27 Jul 1964

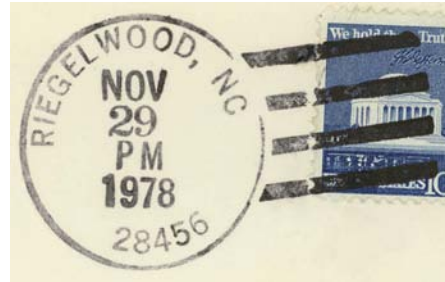
COLUMBUS COUNTY

Riegelwood (Cont.)

(Columbus)



Type 3
23.5 mm Black
International Machine
Type ATS/z 2711 (28456)
22 Dec 1966
10 May 1976



Type 4
32.5 mm Black
1963 Type F/2 4-Bar (28456)
29 Nov 1978
2 Aug 1982

Type 5
23.5 mm Black
International Machine
Type ATS/z 272 (28456)
29 Jan 1985



Type 6
33.5 mm Black
1963 Type F/2 4-Bar (28456)
19 Feb 1987

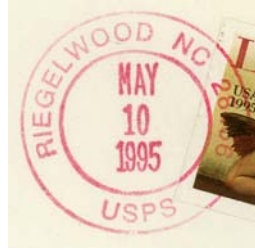


Type 7
33 mm Red
1963 Type F/2 4-Bar (28456)
23 Apr 1992

COLUMBUS COUNTY

Riegelwood (Cont.)

(Columbus)



Type 8
30 mm Red
Self-Inking Postmarker
(28456)
10 May 1995



Type 9
31.5 mm Black
Self-Inking Postmarker (28456)
15 Feb 2007

Rural Stations

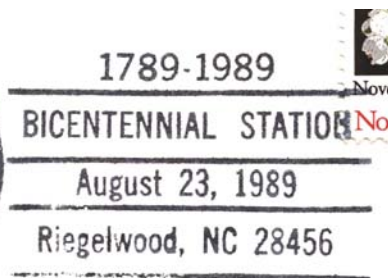
Acme Rural Station
1 Mar 1963
15 Apr 1967



Type 1
30 mm Black
1 Mar 1963
7 Mar 1963

Temporary Station Cancels

Bicentennial Station



Type 1
86.5 x 36.5 mm Black
(28456)
23 Aug 1989

COLUMBUS COUNTY

Robeson (1), from Brunswick County

(Columbus)

T. Curtis Byrd	1877
Henry Lennon	16 Aug 1882
Thomas R. Bass	24 Nov 1882
Erasmus J. Carter	5 Feb 1884
Discontinued	20 Sep 1890
Mail to Freeman	



Type 1
33 mm Black?
31 Dec 1887

Robeson (2)

(Columbus)

Ahart Twigg	28 Aug 1894
David S. Cowan	30 Jul 1895
Platt D. Cowan	31 Jul 1903
Walter R. Bordeaux	3 Apr 1905
Name changed to Newberlin	16 Apr 1907



Type 1
28 mm Black
29 Feb 1896
6 Aug 1900



Type 2
28 mm Black
Doane Type 1-?
7 Sep 1905

Sasspan

(Columbus)

Andrew G. Holmes	30 Nov 1887
Henry H. King	20 Feb 1889
Andrew G. Holmes	20 May 1893
Name changed to Tariff	31 Oct 1893

Sidney

(Columbus)

Elihu Meares	16 Jun 1875
Archibald Toon	3 Aug 1877
Discontinued	9 Jan 1880
Rufus W. Meares	11 Jun 1880
Manuel Wright	5 Feb 1884
Discontinued	19 Apr 1887
Henry D. Hemingway	20 May 1887
Discontinued	19 Nov 1887
Mail to Lebanon	

COLUMBUS COUNTY

Smithburgh

(Columbus)

Andrew J. Smith	24 May 1882
Maly W. Ray	6 Oct 1884
Discontinued	6 Jan 1885
Mail to Hallsboro	

Sue

(Columbus)

James K. Long	21 Nov 1894
Thomas F. Floyd	13 Jun 1899
Discontinued	30 Nov 1901
Mail to Eoka	

Swinson's Cut, from Brunswick County

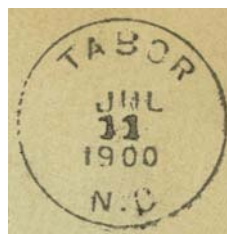
(Columbus)

James J. Swinson	1877
Discontinued	24 Mar 1884
Mail to Robeson	

Tabor, Tabor City, name changed from Mount Tabor

(Columbus)

Condary W. Brown	15 Jun 1895
Jesse J. Spivey	23 Aug 1898
Condary W. Brown	27 Nov 1899
Laura O. Brown	29 Dec 1903
Daniel F. Spivey	24 Feb 1911
William C. Graham	29 Jun 1914
Neill K. Currie	31 Jan 1924
Dothan A. Norris, Acting	15 Jan 1930
Dothan A. Norris	20 Jun 1930
Duncan F. McGougan, Acting	1 Aug 1934
Name changed to Tabor City	1 Apr 1935
Duncan F. McGougan	31 May 1935
Leona B. Brown, Acting	12 Sep 1947
Samuel W. Garrell	4 Aug 1949



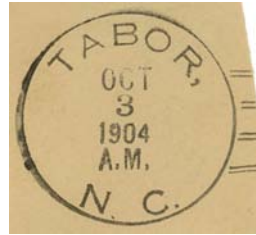
Type 1
28 mm Black
11 Jul 1900

COLUMBUS COUNTY

Tabor, Tabor City (Cont.)

(Columbus)

Ralph W. Spivey, Acting	15 Jan 1955
Richard E. Gordon	26 Jul 1956
Harold P. Ward	17 Sep 1983
David E. Mincey Officer-In-Charge	22 Dec 1989
Charles M. Hunt	24 Feb 1990
David E. Mincey Officer-In-Charge	30 Mar 1998
Sandra K. Crabtree	12 Sep 1998
Kay G. Foster	5 Feb 2005
David E. Mincey Officer-In-Charge	29 Oct 2007
David E. Mincey	5 Jan 2008
Harriett Epps	13 Dec 2014



Type 2
28 mm Black
Doane Type 2-2
3 Oct 1904
26 Feb 1906



Type 3
30 mm Black
Doane Type 3-4
18 Apr 1907
15 Sep 1908



Type 4
31.5 mm Black
1908 Type A/2 4-Bar
20 Apr 1909
19 Dec 1910



Type 5
32.5 mm Black
1910 Type B 4-Bar
19 Oct 1912
19 Aug 1914

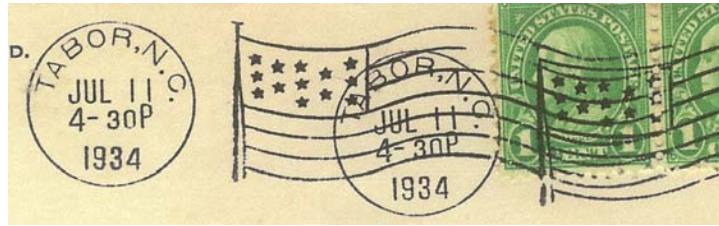
Type 6
23 mm Black
Columbia Machine
Type G 2W
4 Oct 1921
11 Apr 1927

COLUMBUS COUNTY

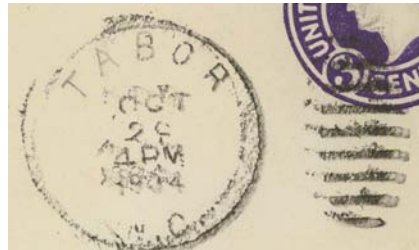
Tabor, Tabor City (Cont.)

(Columbus)

Type 7
 23 mm Black
 Columbia Machine
 Type G 1W
 18 Feb 1928
 27 Feb 1928



Type 8
 22 mm Black
 American Machine
 Type A14
 11 Jul 1934



Type 9
 31 mm Black
 Metal Duplex Type H2
 28 Oct 1934



Type 10
 30 mm Black
 Metal Duplex Type ?
 2 Apr 193x

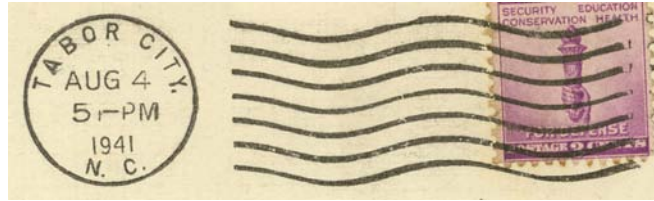


Type 11
 22 mm Black
 American Machine
 Type A14
 28 Nov 1933
 4 Dec 1935

COLUMBUS COUNTY

Tabor, Tabor City (Cont.)

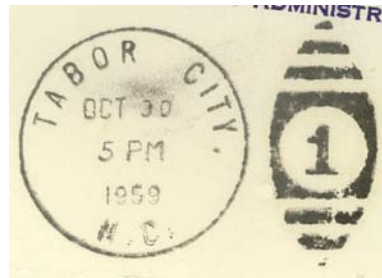
(Columbus)



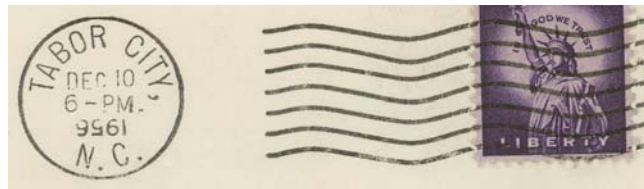
Type 12
22.5 mm Black
International Machine
Type AT/S 2711
15 Feb 1937
29 Oct 1955



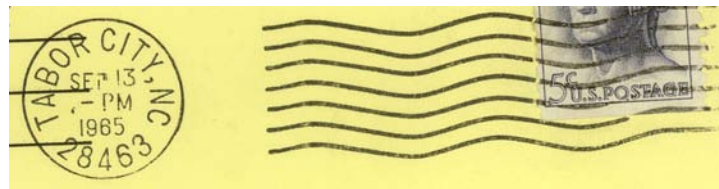
Type 13
29 mm Magenta
5 Aug 1954
11 Oct 1954



Type 14
30 mm Black
Metal Duplex Type E2
8 Dec 1954
10 Oct 1961



Type 15
21.5 mm Black
International Machine
Type J 30
10 Dec 1956
31 Aug 1965



Type 16
21 mm Black
International Machine
Type Hz 30 (28463)
13 Sep 1965
10 Jul 1978



Type 17
33.5 mm Black
1963 Type F/2 4-Bar (28463)
7 Nov 1985
9 Jan 1991

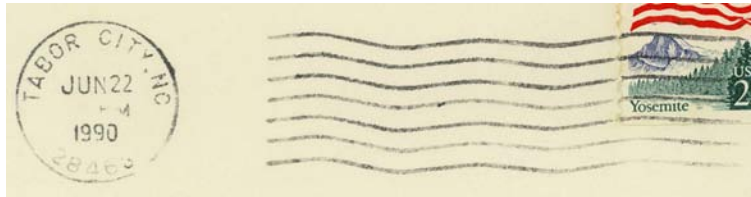
COLUMBUS COUNTY

Tabor, Tabor City (Cont.)

(Columbus)



Type 18
30.5 mm Magenta
4 Feb 1987



Type 19
21 mm Black
International Machine
Type Hz 30 (28463)
22 Jun 1990



Type 20
31 mm Black
Self-Inking Postmarker
Type 2B (28463)
1 Mar 1993
8 Jun 1993



Type 21
34 mm Black
Self-Inking Postmarker (28463)
21 Mar 2007



Type 22
34.5 mm Red
Self-Inking Postmarker (28463)
21 Mar 2007

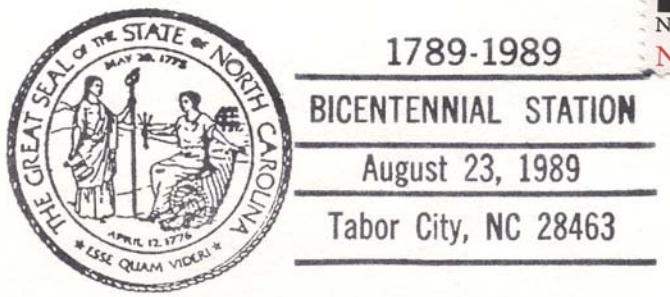
COLUMBUS COUNTY

Tabor, Tabor City (Cont.)

(Columbus)

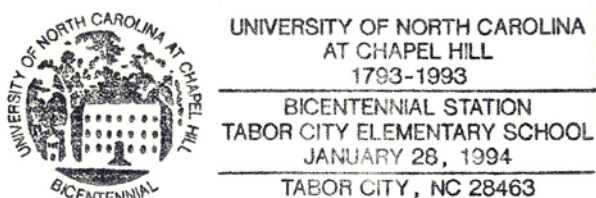
Temporary Station Cancels

Bicentennial Station



Type 1
86 x 37.5 mm Black
(28463)
23 Aug 1989

UNC Bicentennial Station



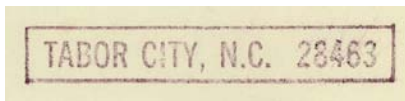
Type 1
77.5 x 25 mm Black
(28463)
26 Jan 1994

Receiving datestamp



Type 1
31.5 mm Black
25 Mar 1910

Third Class Cancelers

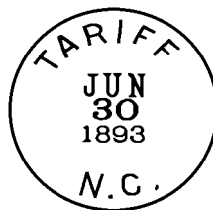


Type 1
49 x 7 mm Magenta

Tariff, name changed from Sasspan

(Columbus)

Andrew G. Holmes 31 Oct 1893
Discontinued 25 Aug 1898
Papers to Council Station,
Bladen County



Type 1
27.5 mm Black
(postmark used before
name of post office of-
ficially changed)
30 Jun 1892

COLUMBUS COUNTY

Turnout

(Columbus)

James H. Springer 1 Dec 1879
 Name changed to **Waccamaw** 23 Aug 1883

Vineland, name changed from Whiteville Depot

(Columbus)

James P. Williams 5 Nov 1885
 Ellery W. Smith 20 Aug 1889
 John T. Best 18 May 1893
 Alice Register 29 Oct 1897
 John R. Gurganus 14 Sep 1901
 G. W. Hill 18 Jun 1913
 Vance Thompson 4 Apr 1922
 Discontinued 31 Dec 1929
 Mail to Whiteville



Type 1
 27.5 mm Black
 26 Mar 1894



Type 2
 27.5 mm Black
 30 Apr 1897



Type 3
 29.5 mm Black
 11 Nov 1902
 12 Oct 1905



Type 4
 31.5 mm Black
 1906 Type A/1 4-Bar
 13 Sep 1909
 25 Oct 1909

COLUMBUS COUNTY

Vineland, name changed from Whiteville Depot

(Columbus)



Type 5
30 mm Black
Metal Duplex Type H2
31 Dec 1929

Waccamaw, name changed from Turnout

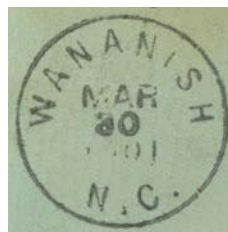
(Columbus)

James H. Springer 23 Aug 1883
Discontinued 29 Mar 1890
Mail to Bolton

Wananish

(Columbus)

Joseph L. Nicholson 14 Jul 1899
Joseph B. Brinkley 28 Sep 1900
Edison B. Council 24 Feb 1903
Henry H. Holton 3 Apr 1908
Jesse K. Council 8 Feb 1912
Robert L. Davis 26 Aug 1921
John L. Flynn, Acting 25 Apr 1930
Carlotta W. Flynn 14 Aug 1930
Discontinued 21 Jan 1972



Type 1
28 mm Black
30 Mar 1901



Type 2
32 mm Black
1910 Type B 4-Bar
8 Feb 1916



Type 3
33 mm Black
1936 Type F/1 4-Bar
18 Nov 1937

COLUMBUS COUNTY

Wananish

(Columbus)



Type 4
32.5 mm Black
1936 Type F/1 4-Bar
20 Jan 1941
24 Jan 1950



Type 5
32 mm Black
1936 Type F/1 4-Bar
12 Apr 1951
21 Feb 1956



Type 6
32 mm Black
1936 Type F/1 4-Bar
7 Dec 1960
25 Jun 1964



Type 7
32.5 mm Black
1963 Type F/2 4-Bar (28470)
19 Oct 1967

West

(Columbus)

Sam M. D. Long 9 Jul 1890
John F. Jacobs 27 Apr 1891
John P. Gore 11 Jun 1895
Discontinued 25 Nov 1898
Mail to Mollie



Type 1
27.5 mm Black
1 Oct 1890

COLUMBUS COUNTY

White Marsh

(Columbus)

Frederick Sasser*	26 Aug 1837
Discontinued	6 Jan 1844
Frederick Sasser *	14 Mar 1844
Matthew G. Sasser	15 Aug 1846
Discontinued	12 Jan 1853
George W. Hil	16 Jun 1853
Discontinued	8 Dec 1855

* Name spelled Sessar in official records

Whiteville, Whitesville, name changed from Columbus C.H.

(Columbus)

James B. White	25 Mar 1811
William Kemp	1 May 1820
R. L. Byrne	6 Jan 1831
Josiah Maultsby	15 Dec 1838
Chester Rockwell	20 Jun 1840
Alfred Smith	23 Apr 1842
Stephen Inman	21 Aug 1844
Josiah Maultsby	9 Dec 1845
Alfred Smith	19 Jul 1848
Allen Inman	5 Jun 1851
Samuel B. Smith	20 Aug 1852
Kenneth C. Chisholm	27 Jan 1853
William H. Best	3 Jan 1856
Neil McPhaul	11 Dec 1857
N. McPhaul, CSA	6 Jul 1861
Samuel B. Smith, CSA	13 Aug 1861
Discontinued on or before	25 Apr 1865
John Morse	29 Jan 1866
Henry C. Moffitt	1 Apr 1868
Discontinued	16 Aug 1875
Lucy Stanly	6 Sep 1875
Spelled Whiteville*	1877 ledger
Lucy Stanly	6 Sep 1875
John A. Maultsby	20 Dec 1878
Joseph A. Baldwin	28 Jul 1885
Daniel P. High**	29 Jan 1886
James D. Maultsby	1 Aug 1889
Neill M. Culbreth	7 Sep 1893
James D. Maultsby	6 Oct 1897
A. Elmo Powell	27 Jan 1914
David Smith	11 Jan 1923
Morrison Formyduval, Acting	18 Apr 1935
Alexander Elmo Powell	20 Jun 1936
Delmas E. Baggett, Acting	31 Jan 1954
Josiah A. Maultsby, Jr., Acting	6 Aug 1955
A. Larnell Willetts, Acting	19 Feb 1960
John A. Harrelson, Acting	6 Feb 1962
John A. Harrelson	22 May 1962
James Hardy Officer-In-Charge	

Whiteville N.C.

Manuscript
29 Aug 1819
9 Feb 1827

Whiteville N.C.

Manuscript
17 Apr 1850
29 Jun 1853

FREE



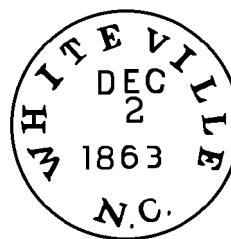
Type 1
30 mm Black
19 May 1855
7 Aug 1856

Confederate

PAID



Type 2
25 mm Black
10 Aug 1860
7 Nov 1861



Type 3
30.5 mm Black
2 Dec 1863
7 Feb 1865

* The spelling of Whiteville or Whitesville in the postmarks did not agree in time with POD records.

** Name spelled High in official records

COLUMBUS COUNTY

Whiteville, Whitesville (Cont.)

(Columbus)

Nearis T. Harvey	30 Aug 1986
William J. McFarland Officer-In-Charge	11 Apr 1988
Willie E. Martin	13 Aug 1988
George L. Graham Jr. Officer-In-Charge	20 Dec 2005
George L. Graham Jr.	24 Jun 2006
Rebecca H. Duncan Officer-In-Charge	8 Feb 2010
Scotte W. Horne Officer-In-Charge	12 Apr 2010
Jerome Myers Officer-In-Charge	3 Sep 2010
James B. Bell Officer-In-Charge	11 Feb 2011
Troy A. Morris Officer-In-Charge	5 May 2011
Troy A. Morris	16 Jul 2011
Phoebe Jordan Officer-In-Charge	2 Oct 2014
James B. Bell	30 May 2015

Reconstruction



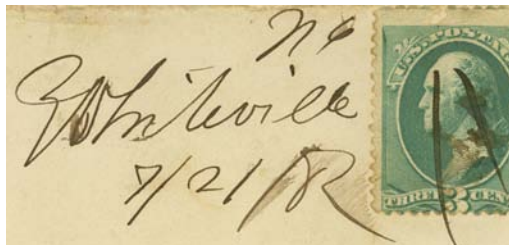
Type 4
31 x 8 mm Black
5 Jun 187x



Type 5
27 mm Black
16 Aug 1872



Type 6
25.5 mm Black
23 Jun 1880
13 Jan 188x



Manuscript
21 Jul 1882



Type 7
27.5 mm Black
31 Jan 1884
24 Nov 1885



Type 8
27 mm Black
14 Dec 1890

COLUMBUS COUNTY

Whiteville, Whitesville (Cont.)

(Columbus)



Type 9
29 mm Black
31 May 1893
18 Feb 1897



Type 10
29 mm Black
15 Mar 1898
2 Apr 1899



Type 11
29 mm Purple
31 Jan 1900



Type 12
30 mm Black
Metal Duplex Type H2
8 Aug 1900
11 Sep 1907



Type 13
31 mm Black
1908 Type A/2 4-Bar
4 Feb 1909
5 Mar 1910

Type 14
25 mm Black
Ielfield Machine
Type A 1
6 Mar 1928

COLUMBUS COUNTY

Whiteville, Whitesville (Cont.)

(Columbus)

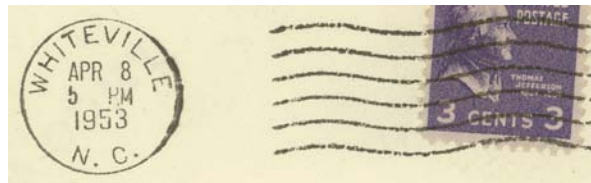
Type 145
23 mm Black
Columbia Machine
Type G 1WT
3 Oct 1932



Type 16
20.5 mm Black
Universal Machine
Type DT 600
17 May 1937
30 May 1946



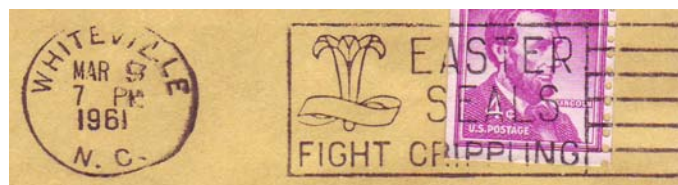
Type 17
27 mm Black
Metal Duplex Type E2
13 Nov 1942
17 Feb 1950



Type 18
20.5 mm Black
Universal Machine
Type DT 300
21 Mar 1951
15 Aug 1967



Type 19
31 mm Black
Handley hand-held roller
3 May 1957



Type 20
20.5 mm Black
Universal Machine
Type DT 400
(Easter/Seals/Fight Crippling)
9 Mar 1961

COLUMBUS COUNTY

Whiteville, Whitesville (Cont.)

(Columbus)



Type 21
20.5 mm Black
Universal Machine
Type DT 400 (state letters wide)
(Easter/Seals/Fight Crippling)
13 Apr 1963
18 Mar 1964



Type 22
20.5 mm Black
Universal Machine
Type DTS/z 300 (28472)
8 Apr 1966
4 Nov 1980



Type 23
32 mm Black
Handley hand-held roller
(28472)
1 Jul 1971
2 Aug 1974



Type 24
20.5 mm Black
Universal Machine
Type DTS/z 400 (28472)
(Easter/Seals/Fight Crippling)
26 Mar 1971



Type 25
30 mm Red
Self-Inking Postmarker (28472)
4 May 1987



Type 26
20.5 mm Black
Universal Machine
Type DTS/z 200 (28472)
14 Jun 1990

COLUMBUS COUNTY

Whiteville, Whitesville (Cont.)

(Columbus)



Type 27
39 mm Black
Self-Inking Postmarker (28472)
5 Mar 1992



Type 28
28 mm Red
Self-Inking Postmarker (28472)
10 Jan 2001

Registered



Type 1
29 mm Magenta
4 Jan 1951

Whiteville Depot

(Columbus)

Alexander F. Powell	19 Nov 1874
Henry B. Register	4 Dec 1884
James P. Williams	15 Dec 1884
Name changed to Vineland	5 Nov 1885

*Whiteville Depot N.C.
Sept 9 1875*

Manuscript
5 Sep 1875

COLUMBUS COUNTY

Wooten

(Columbus)

Edward W. Wooten	18 Jan 1886
Discontinued	24 Apr 1896
Mail to Prong	

Yolande

(Columbus)

James C. Henry	22 Jul 1886
Discontinued	24 Mar 1888
Mail to Clarendon	